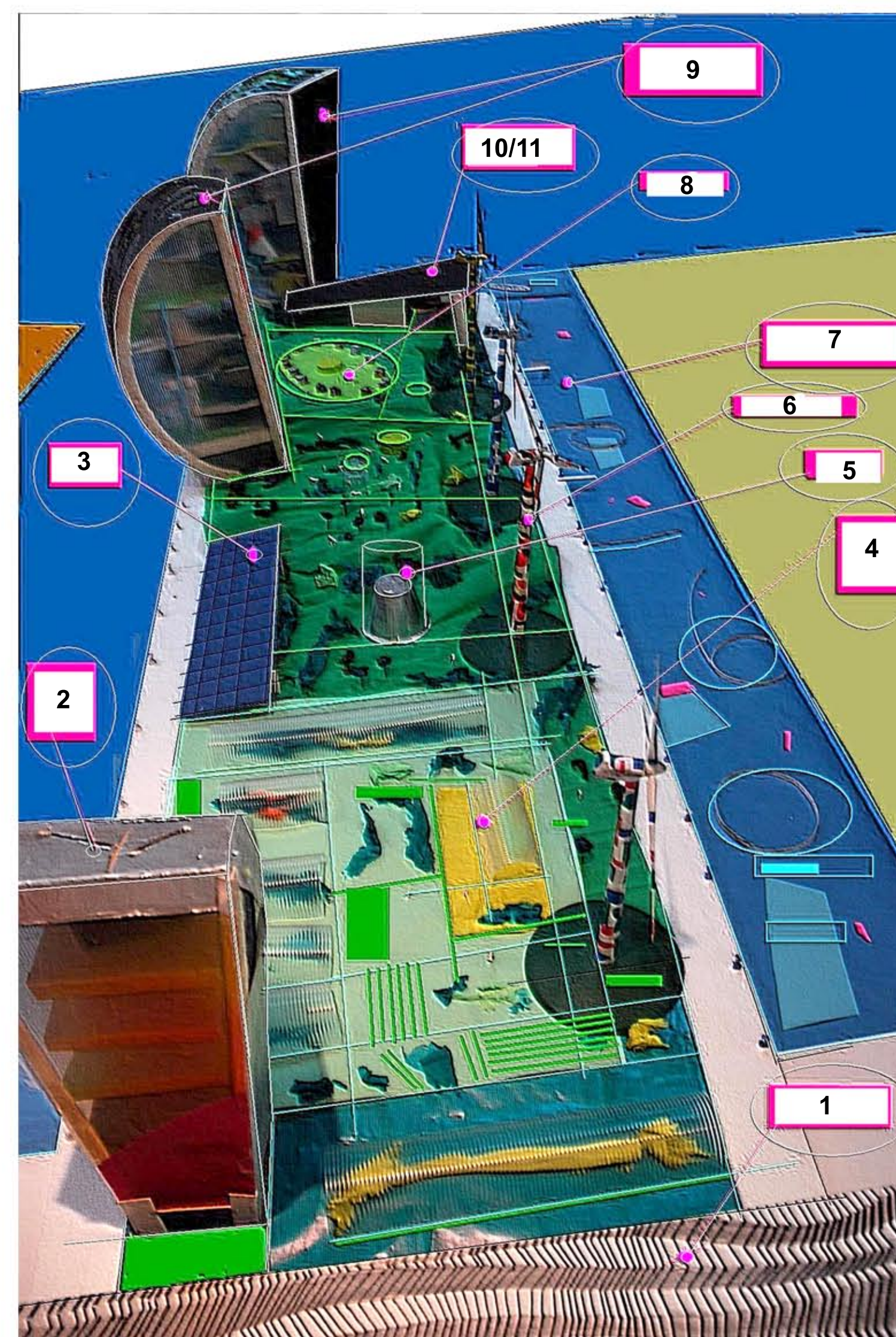
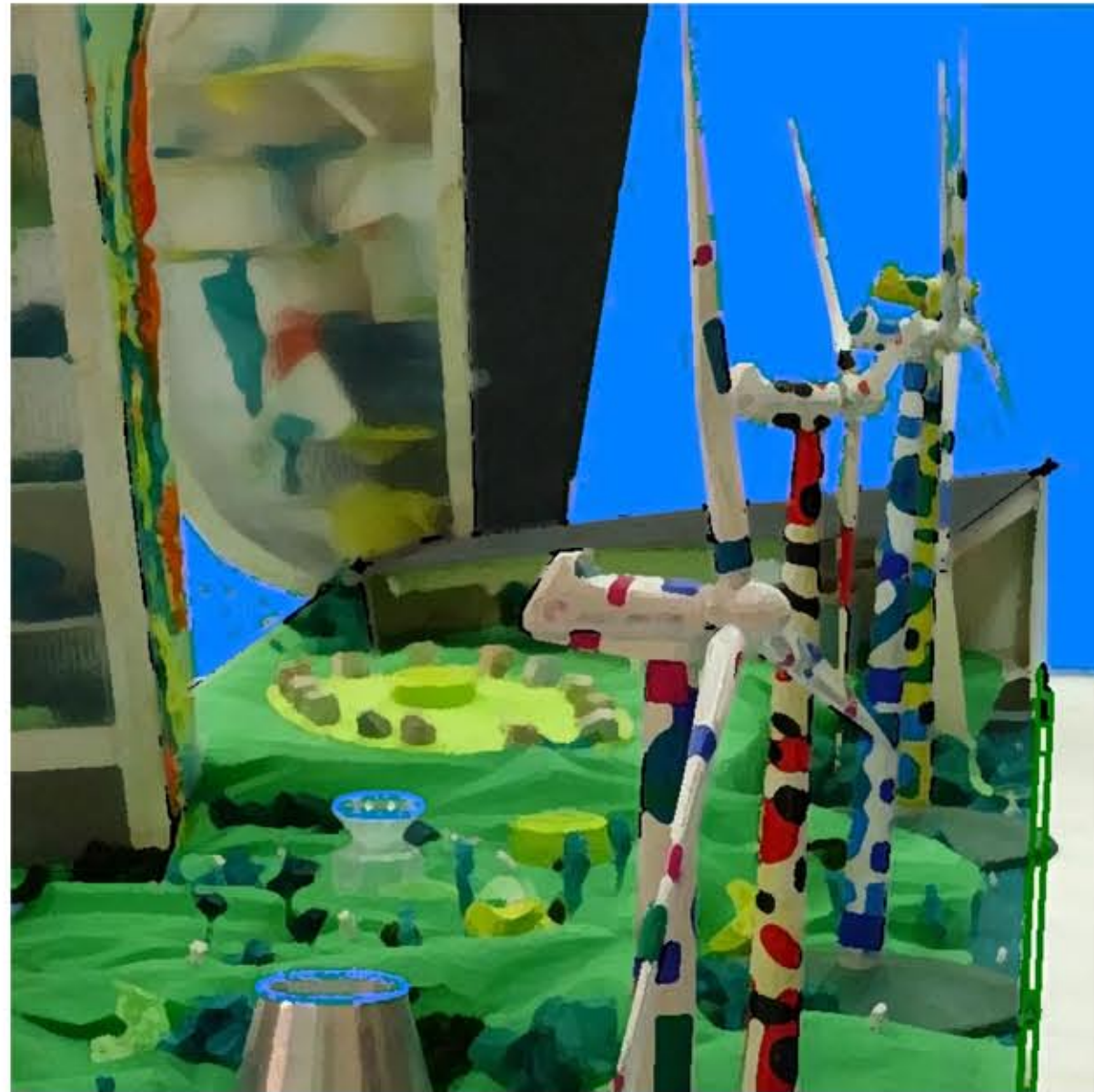


A178368D



- 1- Parking, entrances and exits.
- 2- Reception building and administration offices.
- 3- Warehouses, maintenance repair shops.
- 4- Greenhouses and open farms (seasonal production).
- 5- Water and feed deposits for the farms
- 6- Wind energy generators (with blades and vertical axis turbines)
- 7- Fish farm for local species
- 8- Groups of sculptural vegetable gardens for individual use.
- 9- Waste processing and transformation into energy plant (bio-mass).
- 10- Greenhouse building for agricultural uses - type A-
- 11- Greenhouse building for agricultural uses - type B-

