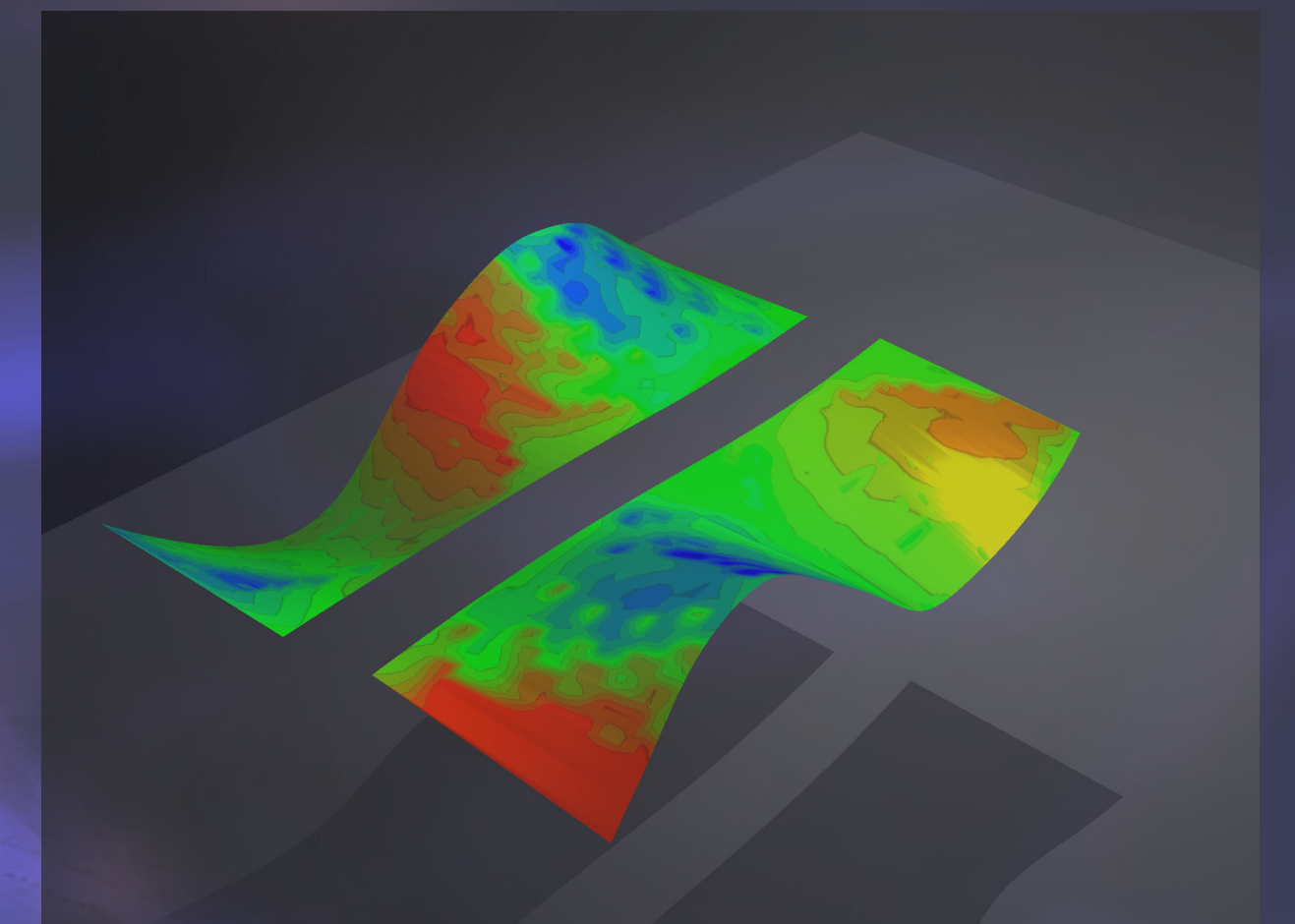
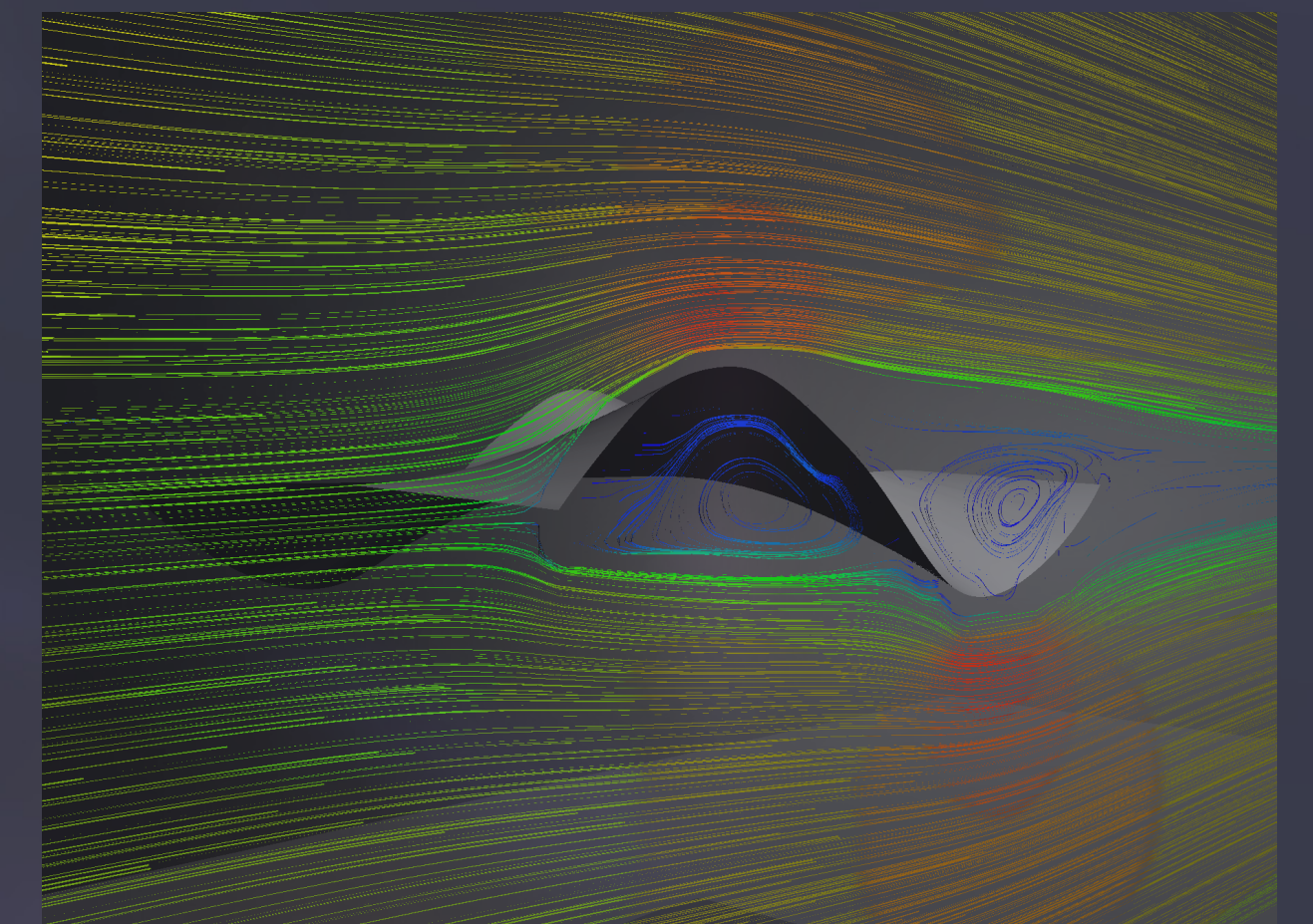


WAVE GENERATOR

- wind & by night

It's not possible to make exactly statements about the produced energy after a year. But we can make an estimated calculation. We assume that the average windspeed is 6,00 m/s, the pressure 1,22 kg/m³ and set the efficiency on 20,00%. So we get a result of ~ 600 Megawatt per year. If the efficiency would be 100,00% the result would be ~ 2.727,647 MW per year.



The two images show how the pressure and the windspeed streams through the structure. It shows how movement is indicated.