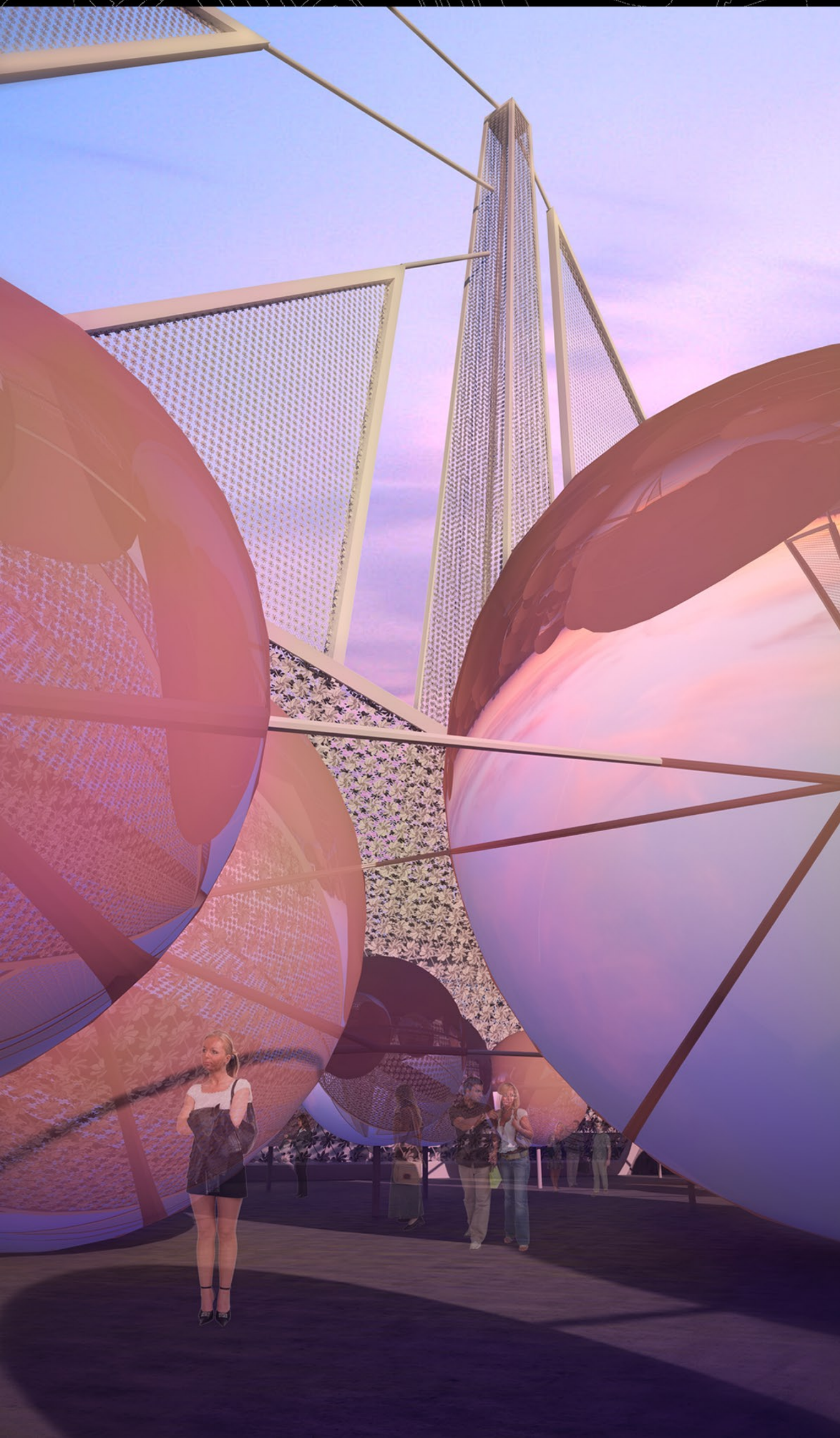
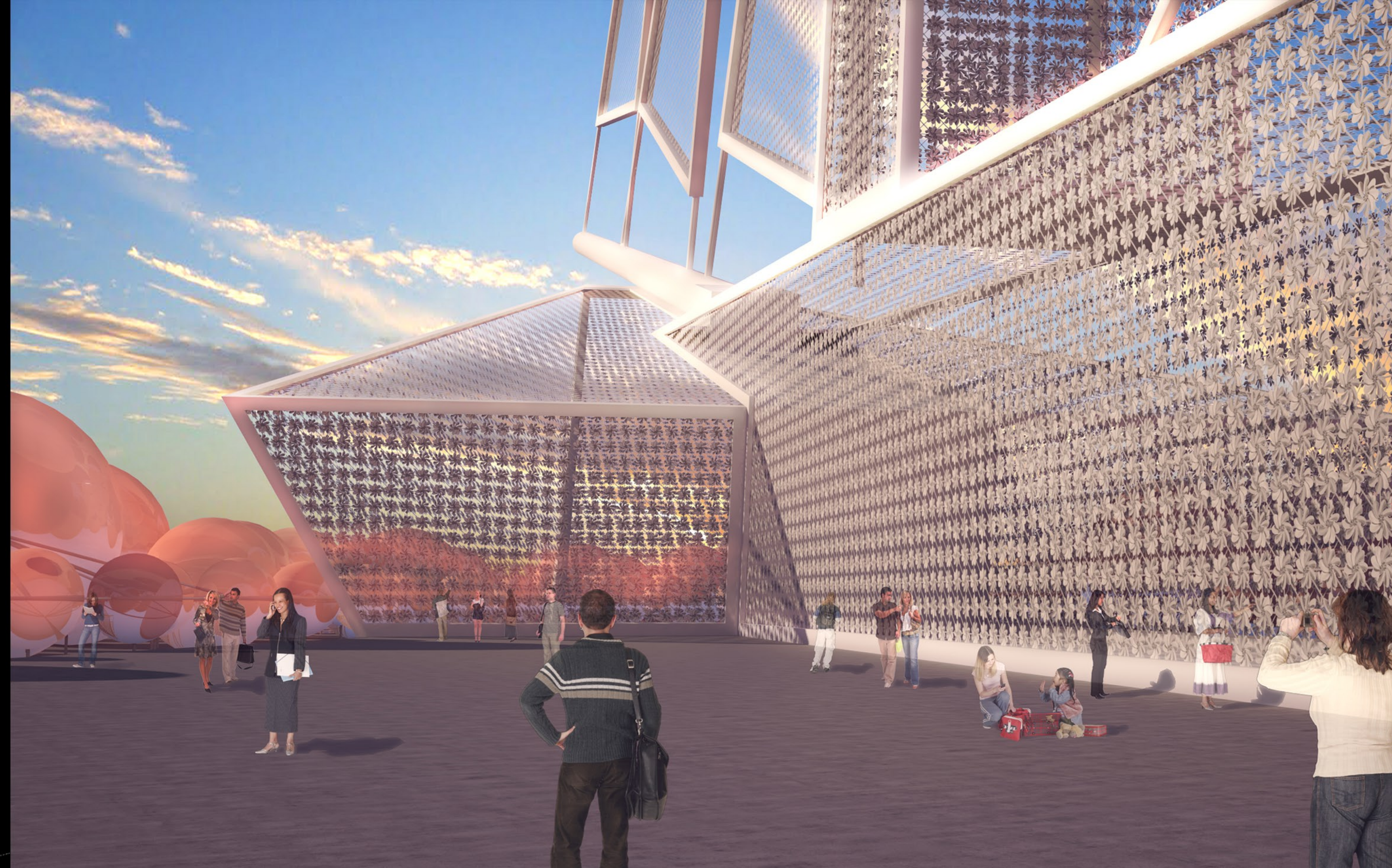


* The effect of environment:

The project is established on the basis of factors derived from the land. Consequently, it forms a harmonious relationship with surrounding environment and a citizen's consciousness. In addition, using lightly assembled structure has no significant influence on the site and the life of water creatures nearby. It then can guarantee the friendly ecological environment to the highest level. Furthermore, fast construction from easily assembled process will help save time, cost and embodied energy.

ETFE Foil is naturally a very transparent material and transmits light across the entire visible light region (380-780nm). A single layer of medium weight ETFE has an approximate 85% light transmission. It improves efficiency and ability of absorbing sun light on big sphere (double layers). In addition, it can be recycled with ease, self-cleaning, durable, flexible and capable of consuming minimal embodied energy.



* Interactive axis:

- The location of the project and the mermaid statue makes up a perfectly iconic and meaningful interactive axis. Not only does it inspire a breakthrough in design but it can also attract million of people. In other words, the project helps develop emotional relationships among man, nature, and even the history of the land.
- The connection of new factors and old ones generates a colorful environment and raises attention and awareness of a friendly community space.

* Estimated power generated:

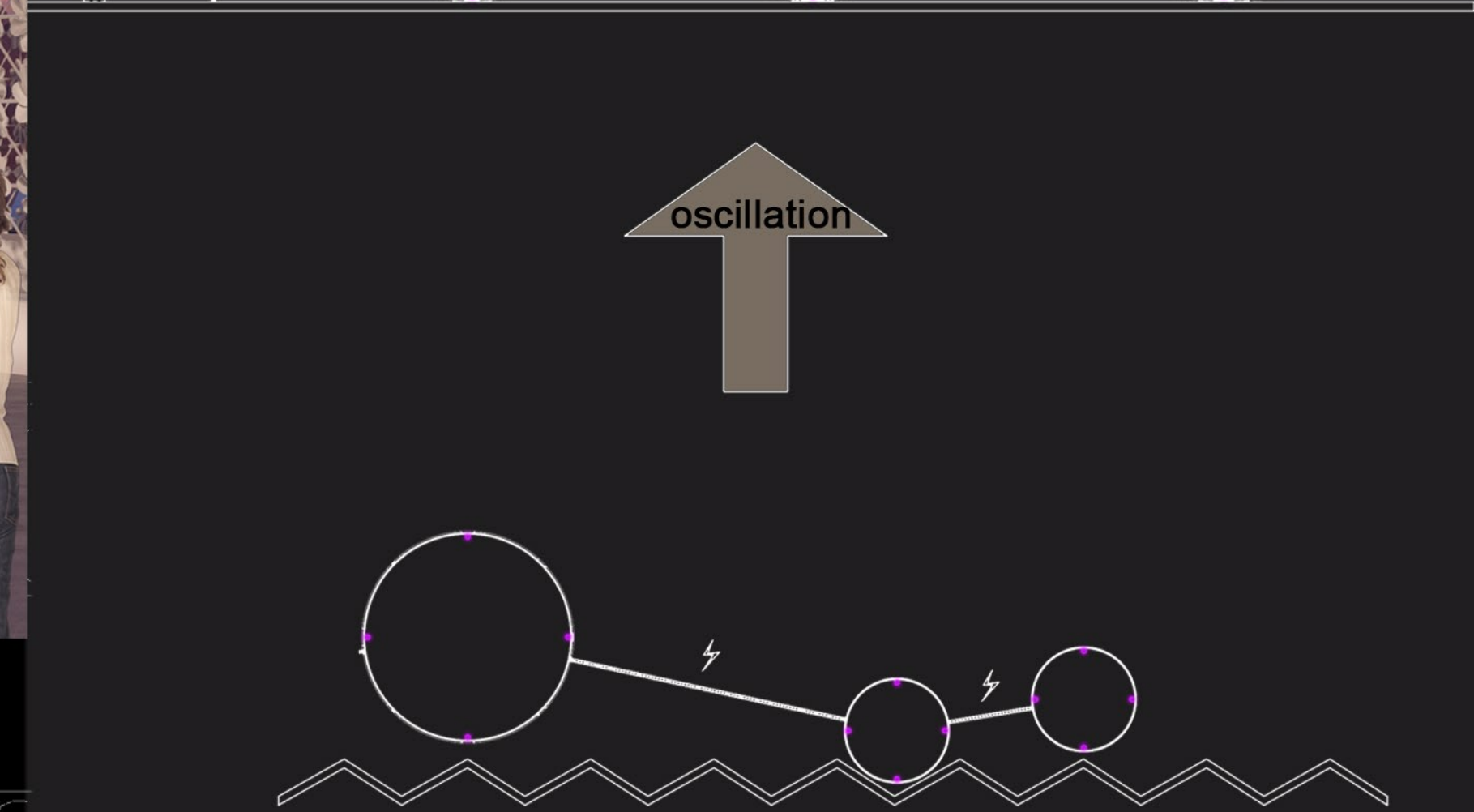
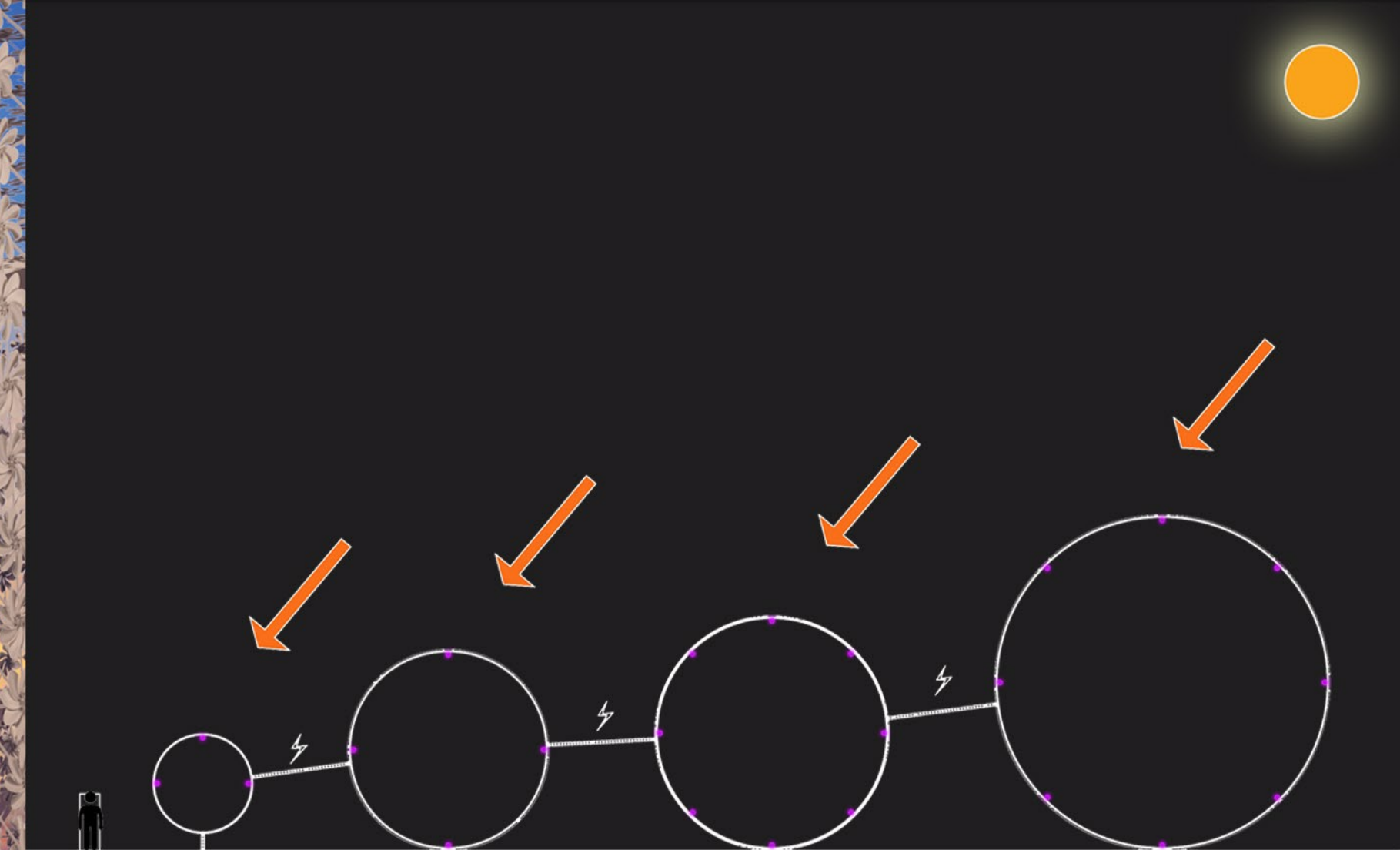
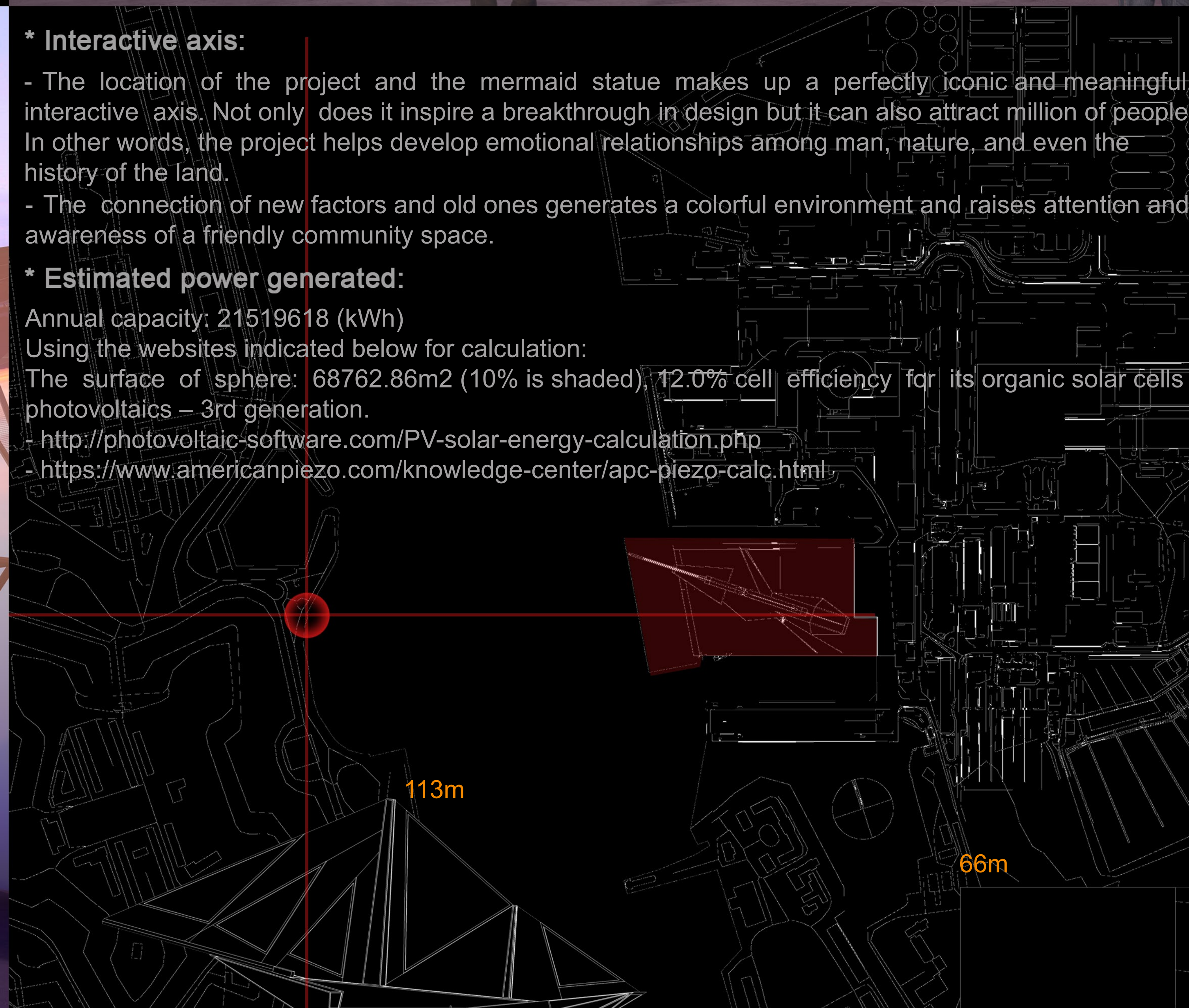
Annual capacity: 21519618 (kWh)

Using the websites indicated below for calculation:

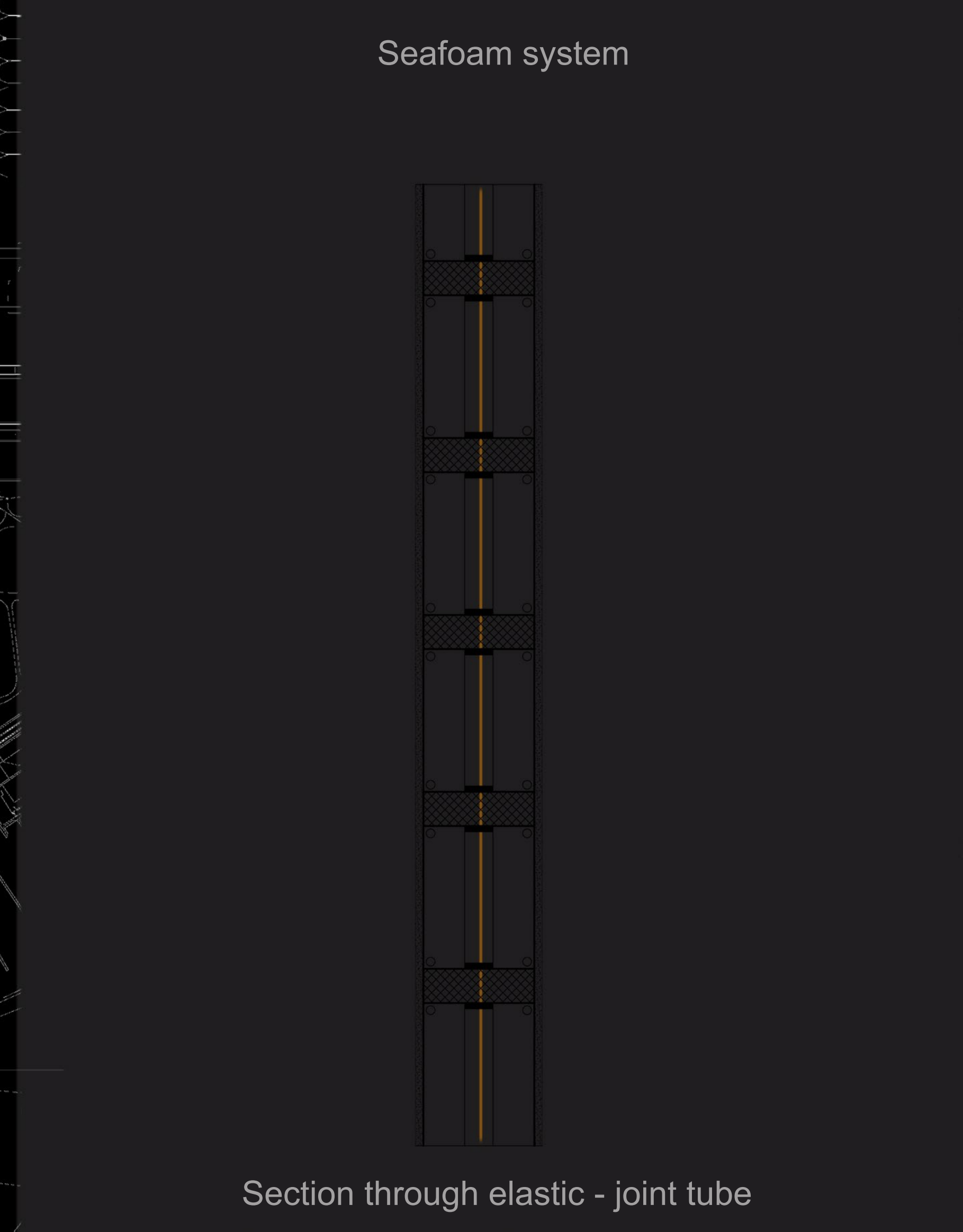
The surface of sphere: 68762.86m² (10% is shaded), 12.0% cell efficiency for its organic solar cells photovoltaics – 3rd generation.

- <http://photovoltaic-software.com/PV-solar-energy-calculation.php>

- <https://www.americanpiezo.com/knowledge-center/apc-piezo-calc.html>



Seafoam system



Section through elastic - joint tube