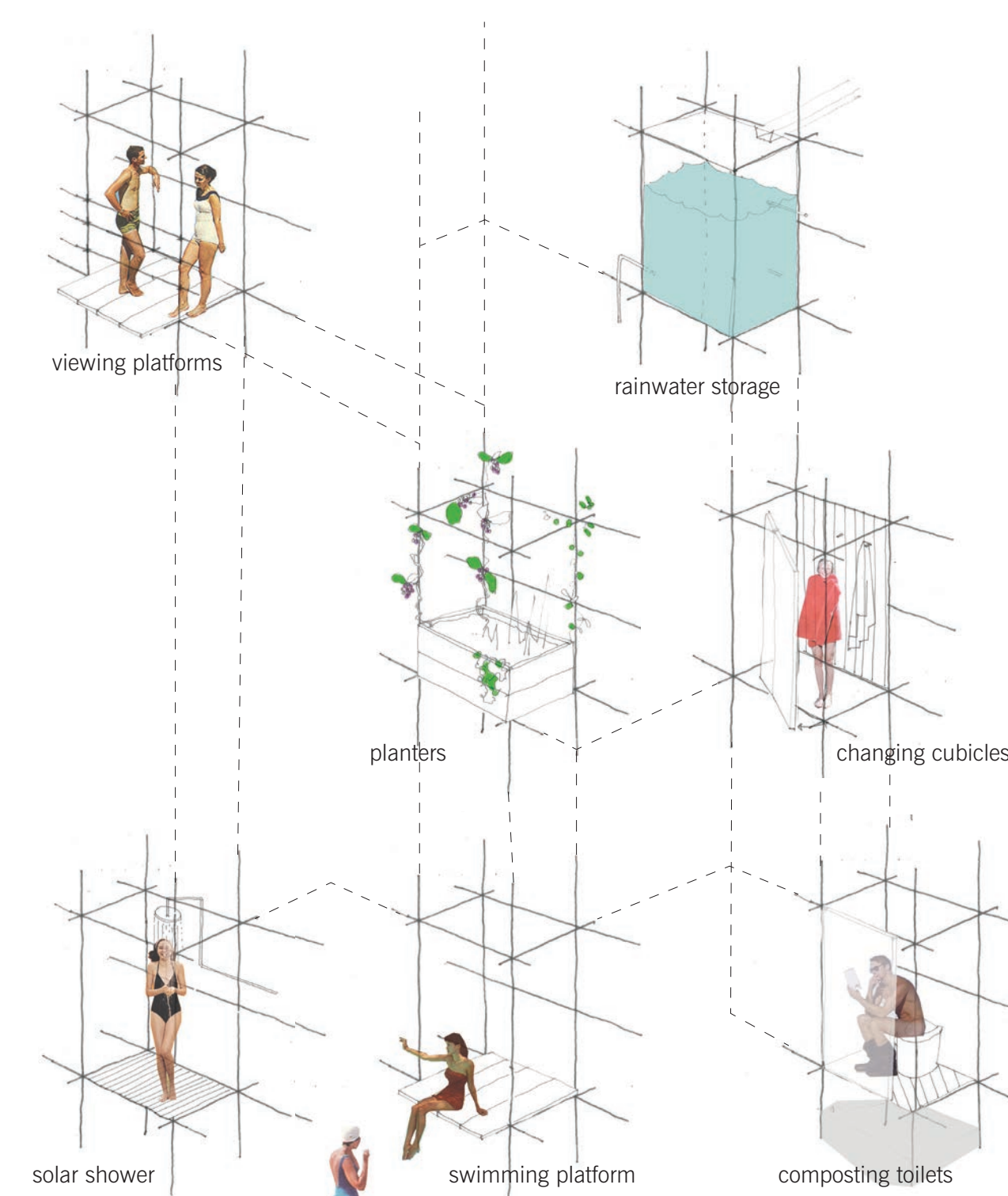


Natural pools with canopy spiralling up above



Overview of proposal



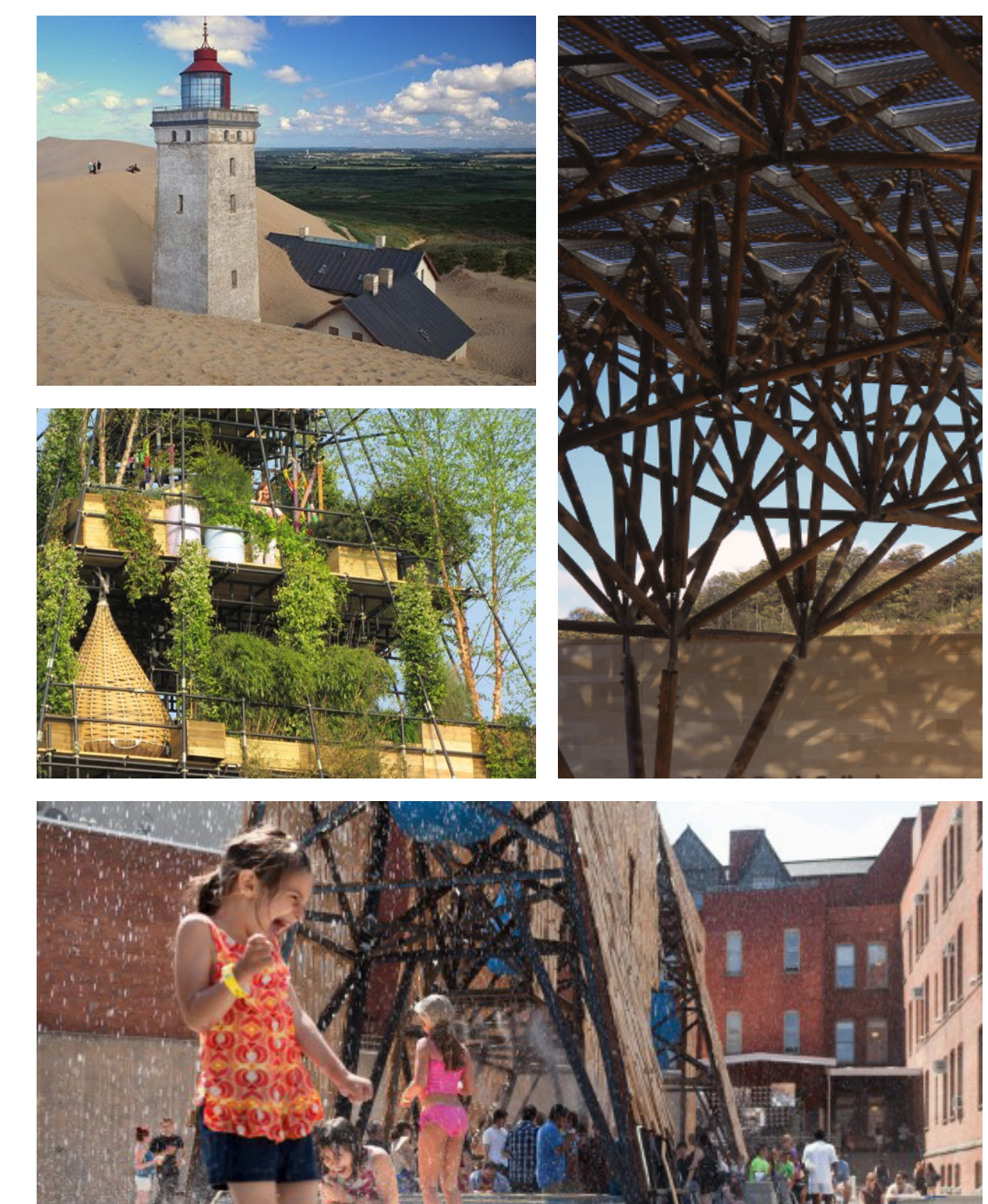
A range of uses inhabit the framework which supports the canopy



The approach to the spa is through a sensory landscape that offers a variety of experiences as the water beyond is gradually revealed.

The visually striking canopy with its tree-like supports is visible from across the harbour. The energy generated by this canopy is experienced on site in the form of heated spa pools. The thermal stores that provide heat to the pools in the winter are evidenced in the earth berms. These are formed on the site using construction rubble. The proposal demonstrates an integrated sustainable approach to the site, where the processes of re-cycling, re-use and energy generation are evident in each element of the proposal.

The tree-like structures supporting the canopy are made of steelwork recycled from buildings, shipping & industry, and scaffold poles. They accommodate a range of low impact ancillary uses required for the spa experience (changing rooms, wcs, showers, stores etc).



Precedent images, clockwise from top right: building sit amongst the dunes in Jutland; a latticework structure supports a PV canopy; inhabited scaffold walls at PS1 in New York; scaffold garden at the Chelsea Flower Show in London.