

# re - WIND

Re-wind is a direct connection between the Danish philosophy and its habitants, a visual stimulus that is a relation between the Danish personality and their way of seeing the world.

Re-wind is a blank sheet where all thoughts are born out of Danish culture: strong winds that create waves on the horizon, rain that stains the window's wandering eyes and the landscape which colours change with the seasons.

Its expression communicates the sense of the infinity of nature and its sensations.

The floors containing plantations, wrap around the wind turbines and create thereby a form that can almost be described as a symbol of eternity, or the new symbol of Copenhagen.

The building is an ecosystem where rain and wind are harvested to nourish the plantations of vegetables, fruits and herbs, which in their turn serve the restaurant on the top floor.

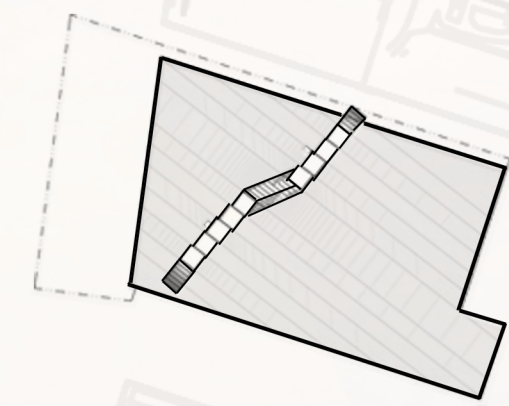
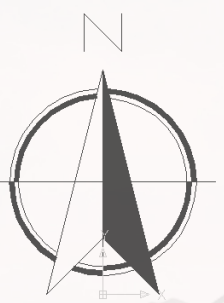
of the project, but can also provide the building and its context with up to 9 000 Mega Watt hours per year. The rotation of the wings creates natural ventilation that passes through each floor to provide the plantations with oxygen.

The wind turbines do not only provide a very clear description

Re-wind also contains over 3000 square meters of plantations of products supplying the new restaurant on Refshaleøen. Each plantation contains different types of local products, suited for the Danish climate and thereby reduces the need for transportation of food for the restaurant.

The rainwater is being collected and brought into the building on each floor to irrigate the plants and also to be used for the sanitary systems within the building. In this manner, the eternal circuit of nature manifests itself to the habitants of Copenhagen, inviting them to lose their sense of time and place.

Re-wind offers a new function as well as a clear thought about ecology when it turns the skyline of Copenhagen into a discussion about energy.



Site plan - Scale 1 : 5000

