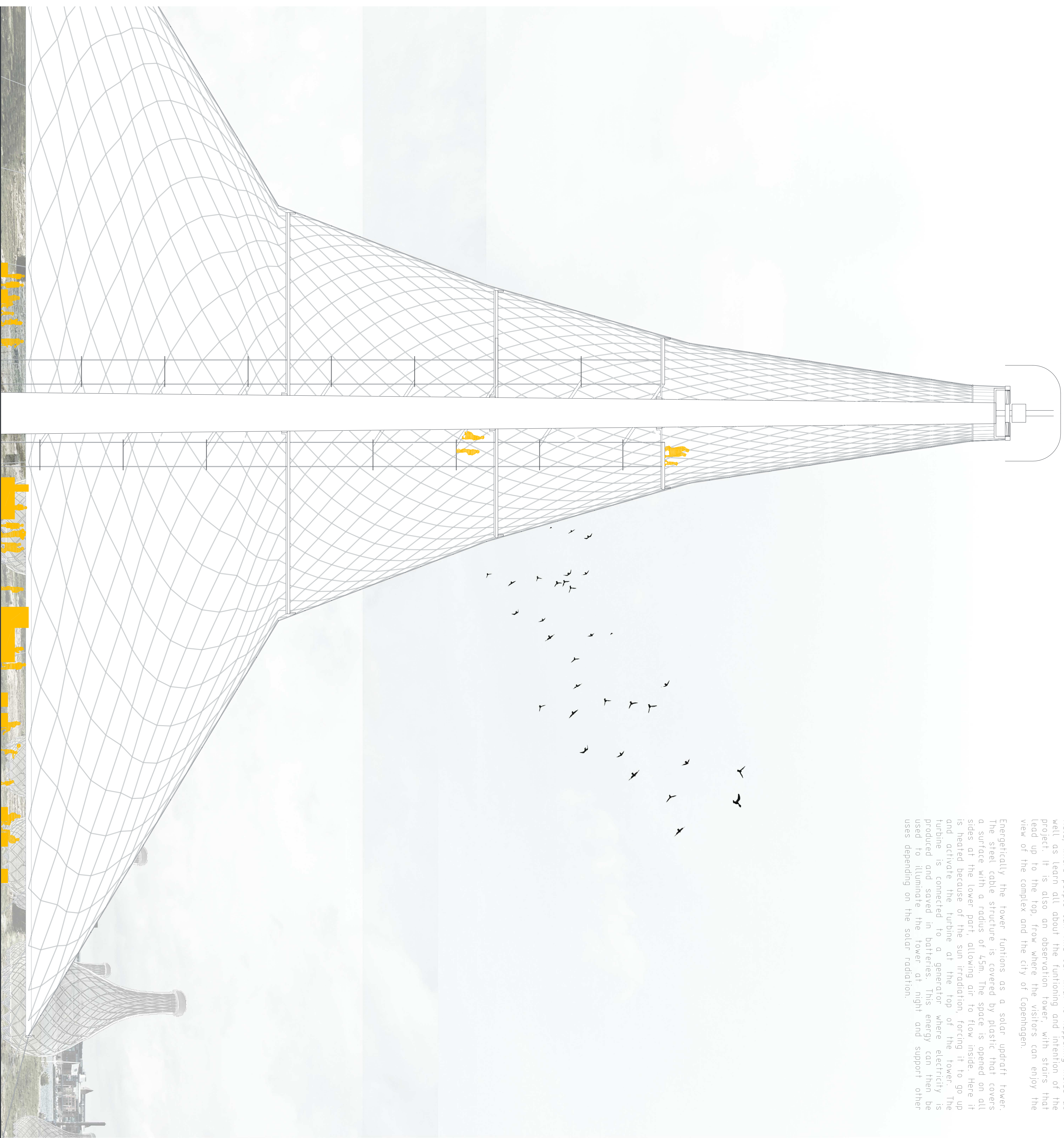
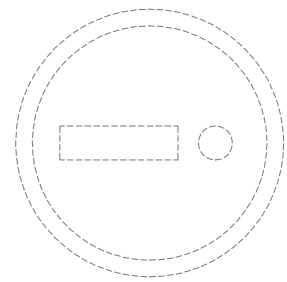


The tower acts as the entrance and information point to the field, where people can find out what is happening inside as well as learn all about the functioning and intention of the project. It is also an observation tower, with stairs that lead up to the top, from where the visitors can enjoy the view of the complex and the city of Copenhagen.

Energetically the tower functions as a solar updraft tower. The steel cable structure is covered by plastic that covers a surface with a radius of 45m. The space is opened on all sides of the lower part, allowing air to flow inside. Here it is heated because of the sun irradiation, forcing it to go up and activate the turbine at the top of the tower. The turbine is connected to a generator where electricity is produced and saved in batteries. This energy can then be used to illuminate the tower at night and support other uses depending on the solar radiation.

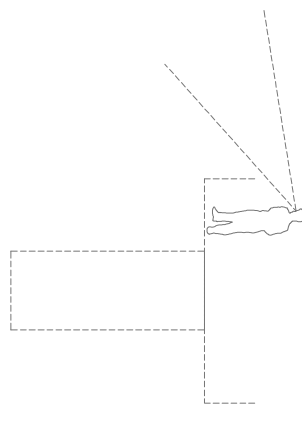
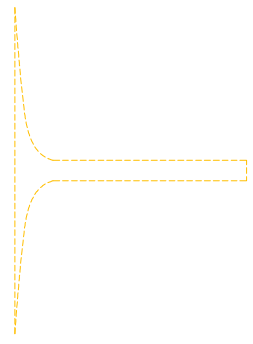
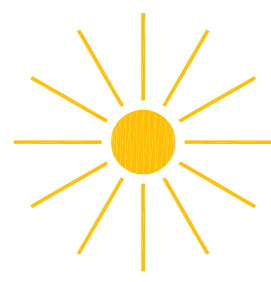


tower section 1m:50

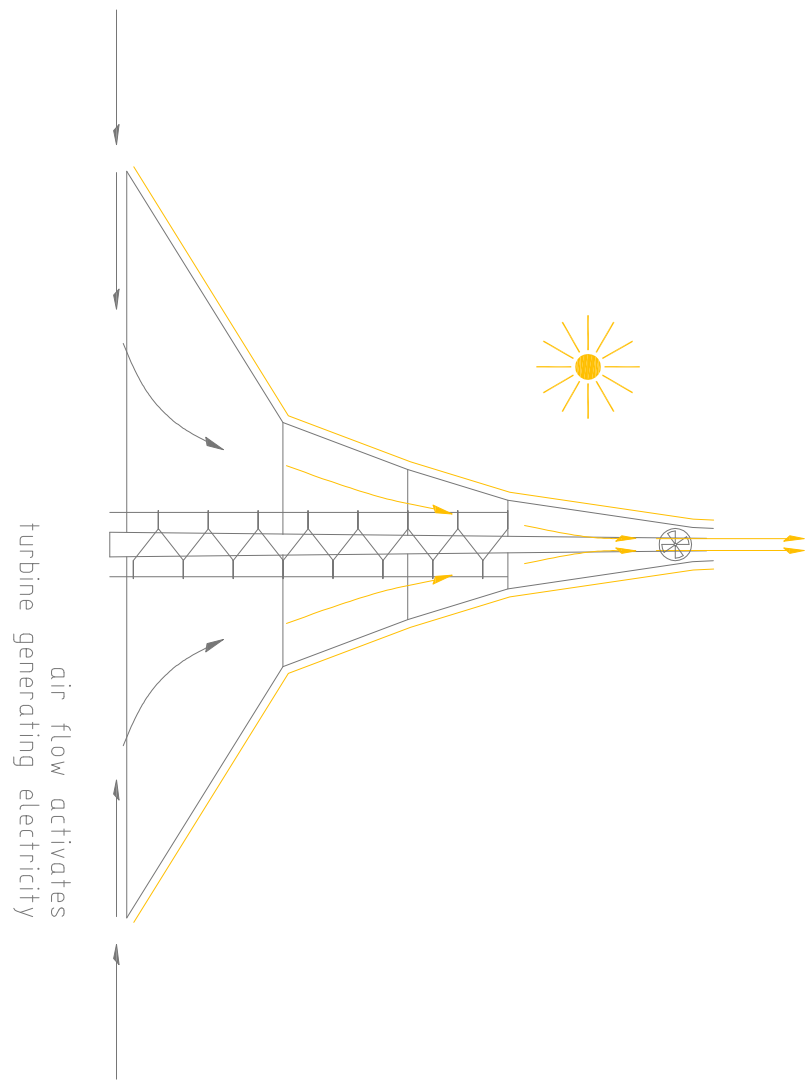
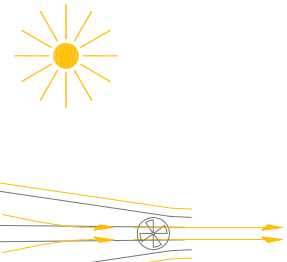


TOWER
ENTRANCE
INFORMATION POINT

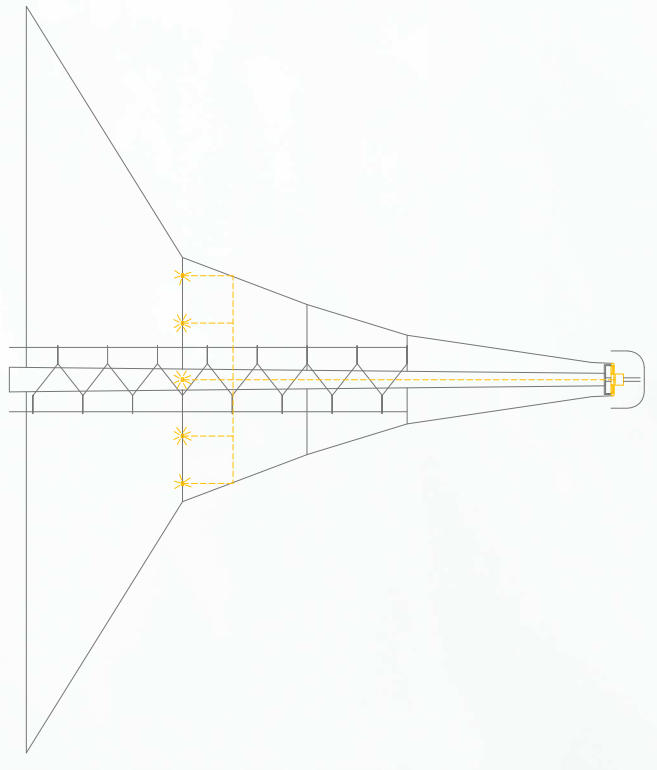
TOWER
ENERGY THROUGH
SOLAR UPDRAFT TOWER



TOWER
LANDMARK
OBSERVATION POINT



air flow activates
turbine generating electricity



led lighting from
generated energy

