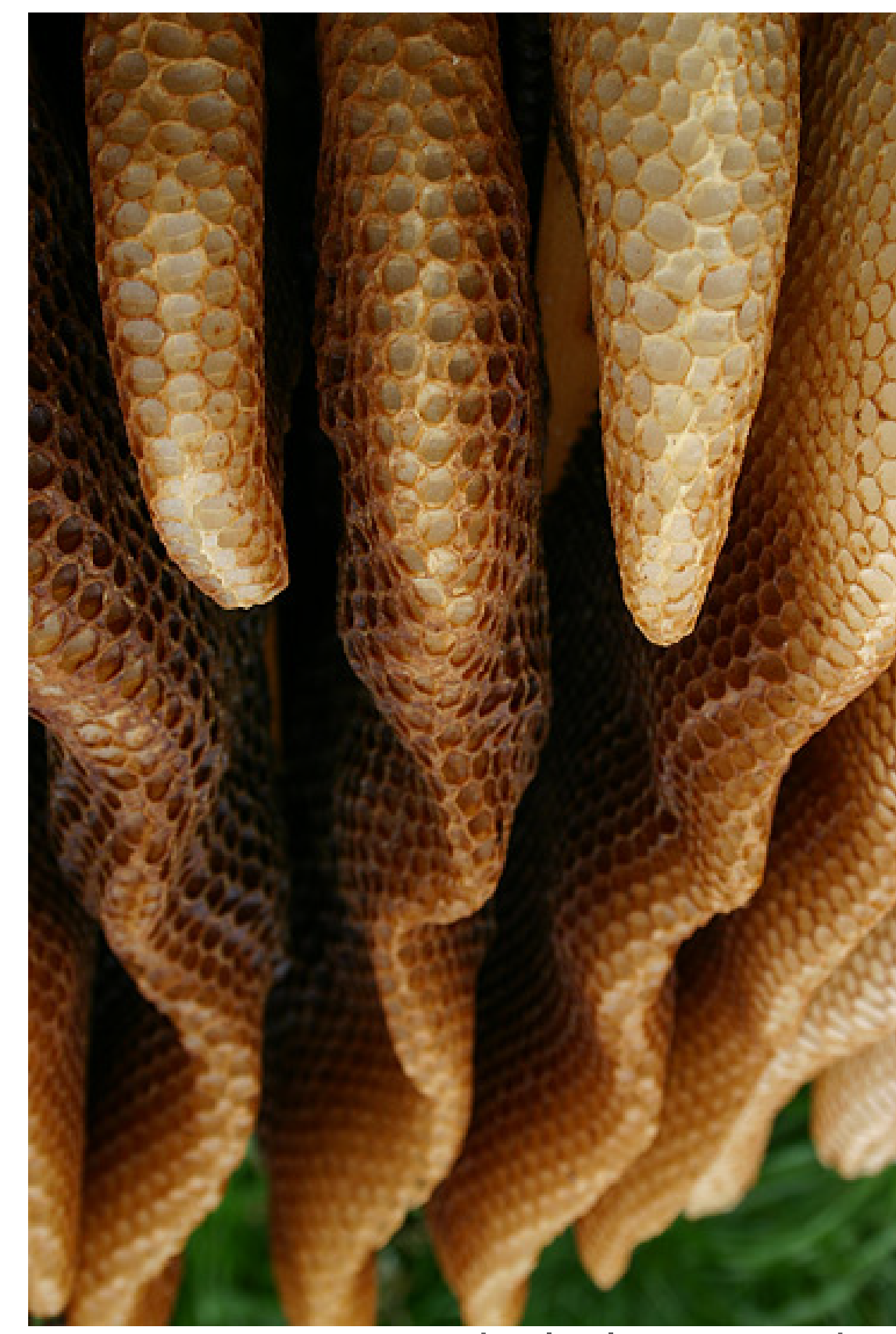
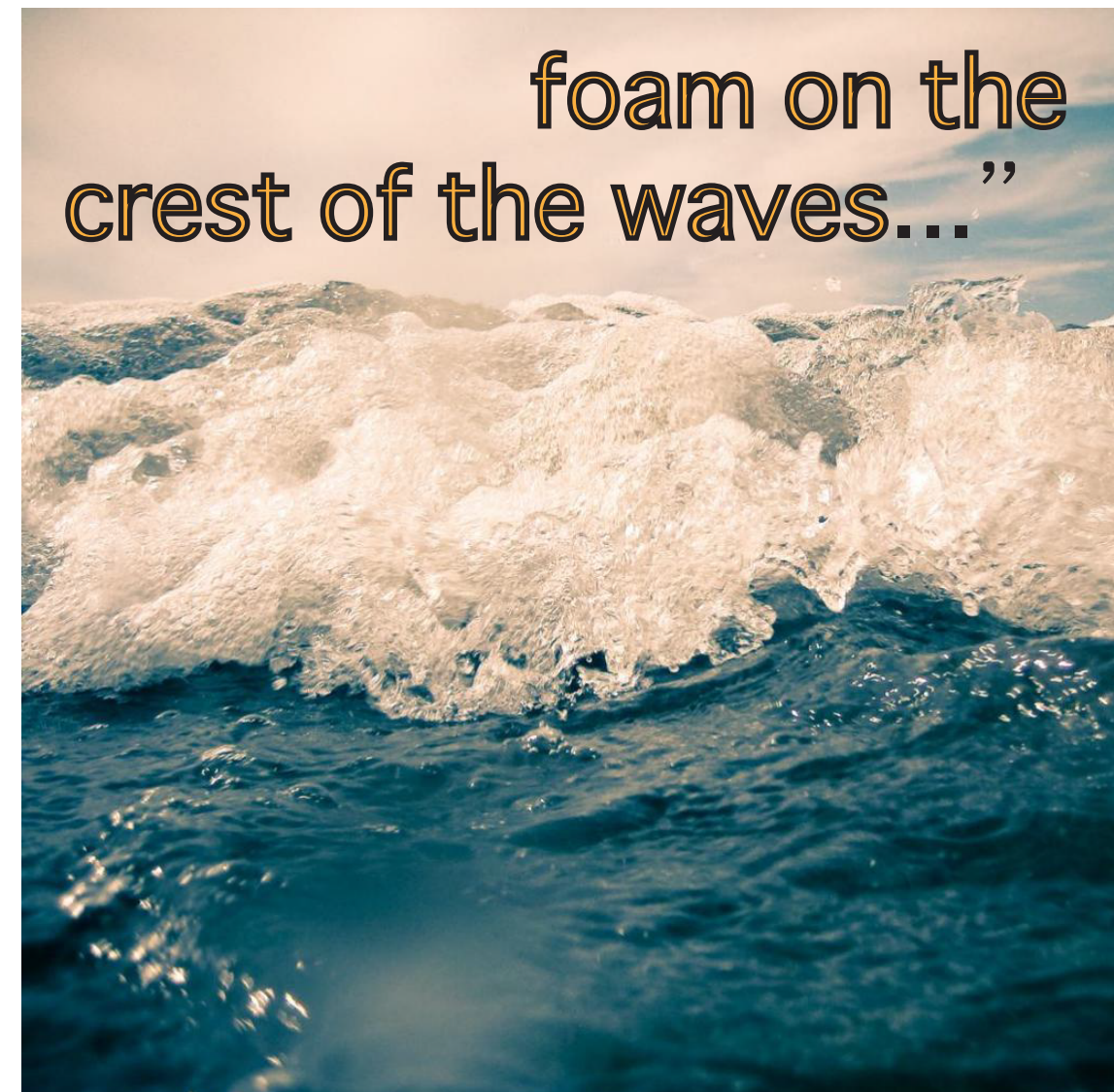
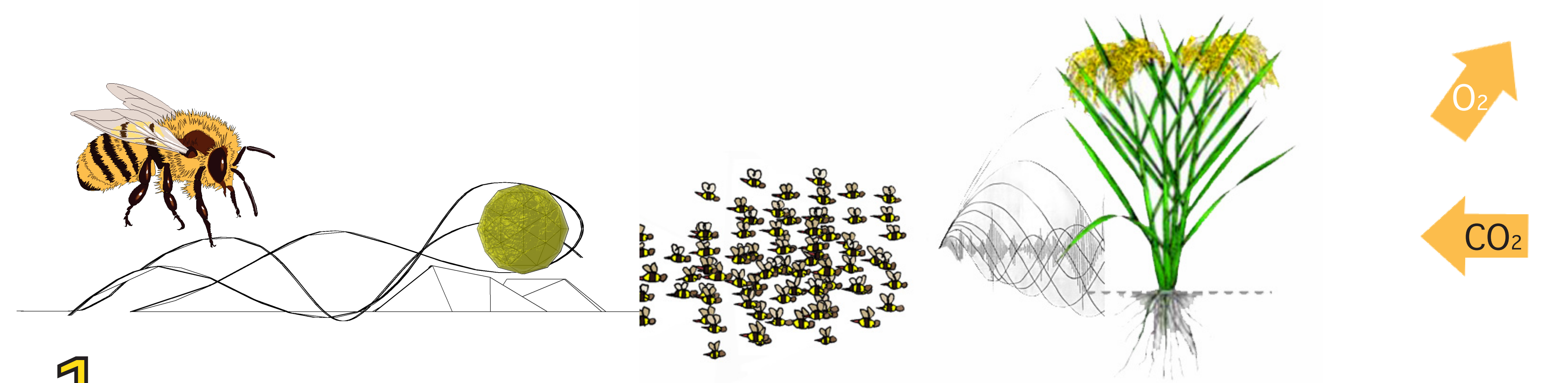


“...the first morning  
after he marries  
another  
your heart will break,  
and you will become

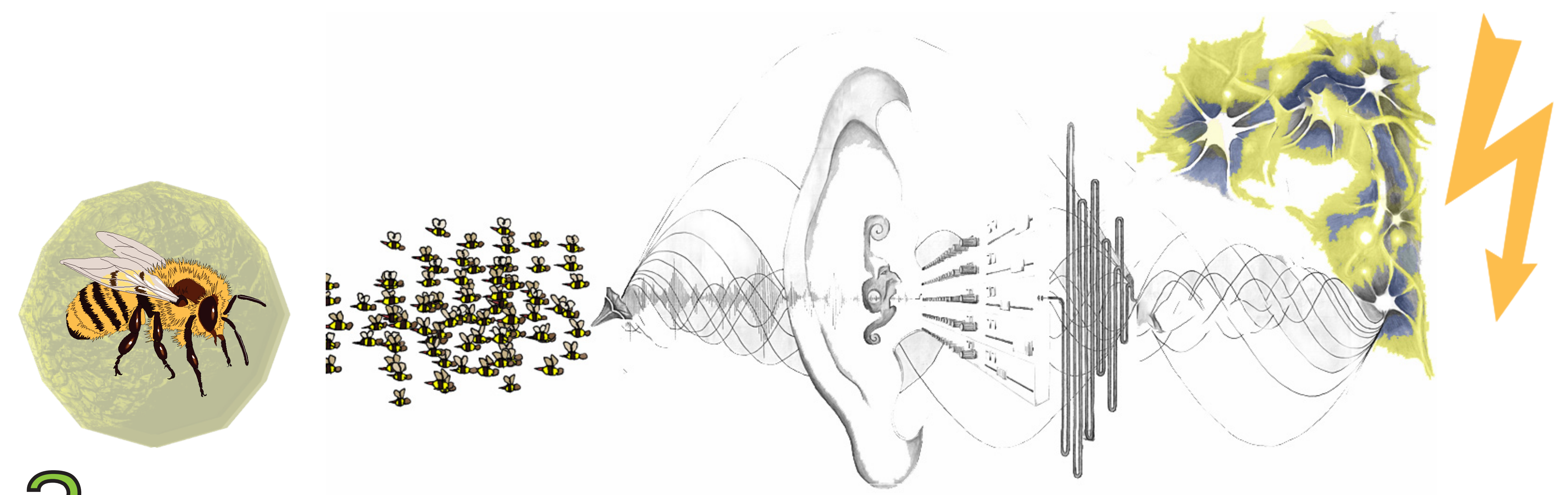


cit. the little mermaid,  
Hans Christian Anderson



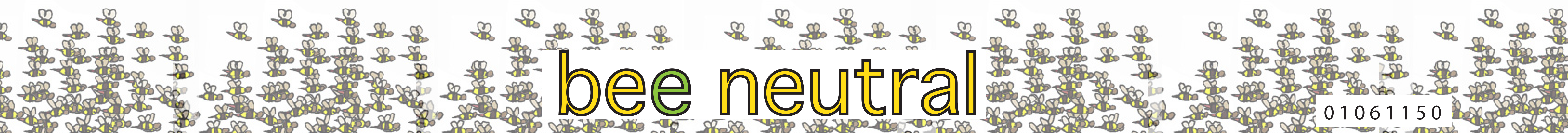
1.

So on the one hand side **bee neutral** transforms CO2 to O2, during the process of photosynthesis of all climbing and growing plants, and reduces existing CO2 emissions.



2.

On the other hand side the sound of the sheltered bee colonies is used by **bee neutral** to produce energy without creating new emissions, through the piezoelectrochemical (PZEC) effect.



bee neutral

01061150