

Park in the Heart of Refshaleøen

Battery H₂O is more than just a renewable energy production & storage system. It will be a park to anchor the redevelopment of Refshaleøen by providing residents with passive and active recreation offerings. It also offers a unique destination to attract visitors and will be the gateway to Refshaleøen via the site's water taxi. The proposed master plan includes a new public square adjacent to the site. The metal building currently separating the site from the public square will be demolished and in its place, 2 new buildings with a total area of approximately 10,500 Sq. M will be constructed. These buildings will flank a connection between the public square and the Battery H₂O park. Since the tanker containers are tower elements, the opportunity exists to interject programmatic elements into their construction as well as the rest of the site. These programmatic elements provide attractions to lure visitors to this location as well as potential revenue streams for the development.

A. Lagoon

A salt water marsh featuring the power generation components of windmill pumps and hydro-electric turbines. Boardwalks allow visitors to wander through the lagoon and experience the lagoon up close.

B. Water Battery Storage & Power Generation

80,000 Cu M. of water is stored in re-purposed oil tanker hulls. Power is generated in the outflow of water through hydro-electric turbines, creating water features for the park.

C. Central Open Space

A gathering space in the beach zone. Suitable for passive recreation or large events such as the Copenhagen music festival.

D. Event Space

A 1,600 Sq. M structure (on 2 levels) overlooking the central open space suitable for event rentals such as weddings, corporate retreats, etc.

SITE PLAN

Site Plan Key

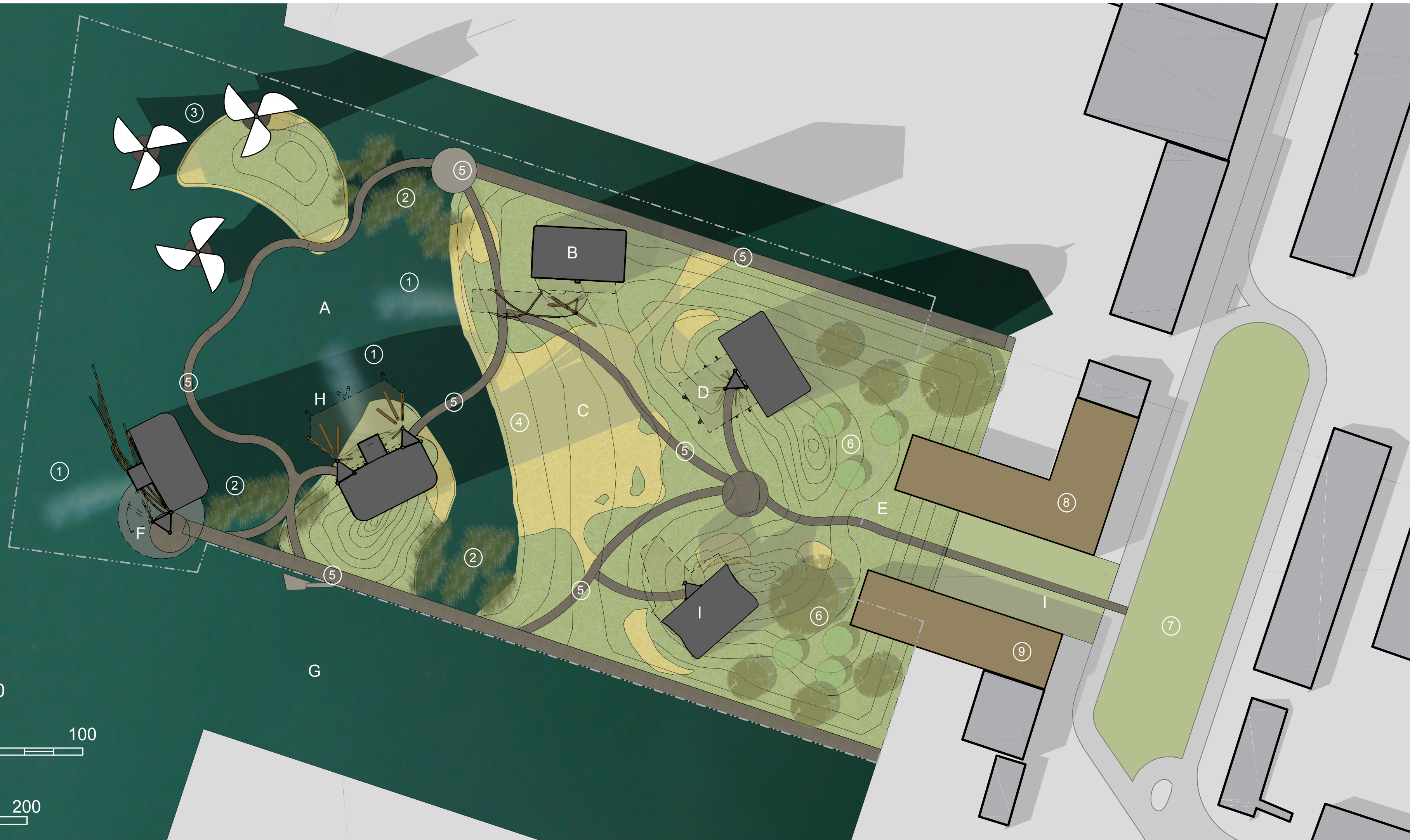
1. Water feature: Hydro-electric turbine spray field
2. Saltwater marsh - wetland plants
3. (3) Vertical axis windmill water pumps
4. Beach
5. Boardwalk path
6. Woodland - Berm
7. New Refshaleøen Public Square
8. New mixed use buildings



SCALE = 1:1000

0 50 100
METERS

0 100 200



E. Park Entry

The park is entered through a sand dune gateway featuring a view of the park and the Little Mermaid statue across the harbor.

F. Observation Deck

An observation deck is incorporated into the outermost tanker container. At 100 M it features stunning views of downtown Copenhagen, the park and even allows visitors to go inside the tanker to see the water storage.

G. Water Taxi Arrival

A water taxi stop connects the site to central Copenhagen and the harbor *Elemental Battery H₂O* will be the gateway into Refshaleøen.

H. Harbor Bath

A harbor bath is currently planned for a parcel north of the site. Instead of its currently planned condition, the harbor bath will be integrated into a tanker container offering bathers a unique experience of swimming in harbor water at a height of 100M.

I. Control Center

A micro-grid will be established in Refshaleøen, allowing *Elemental Battery H₂O* generate and store enough power for the entire area. This control center monitors the flow of energy to and from the micro-grid and contains all required electrical equipment.

I. Gateway to Refshaleøen Square

As part of the proposed Refshaleøen master plan a new public square will be developed adjacent to the site. This will link the park to the main commercial thoroughfare in the development. An existing metal building will be demolished and 2 new buildings will be constructed in its place flanking a gateway into the park.

