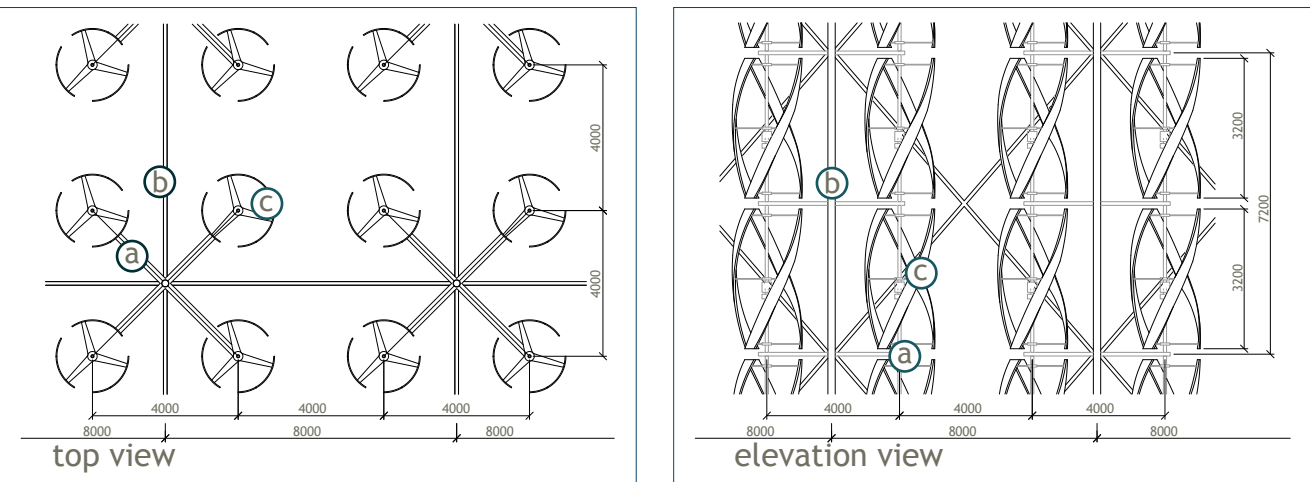




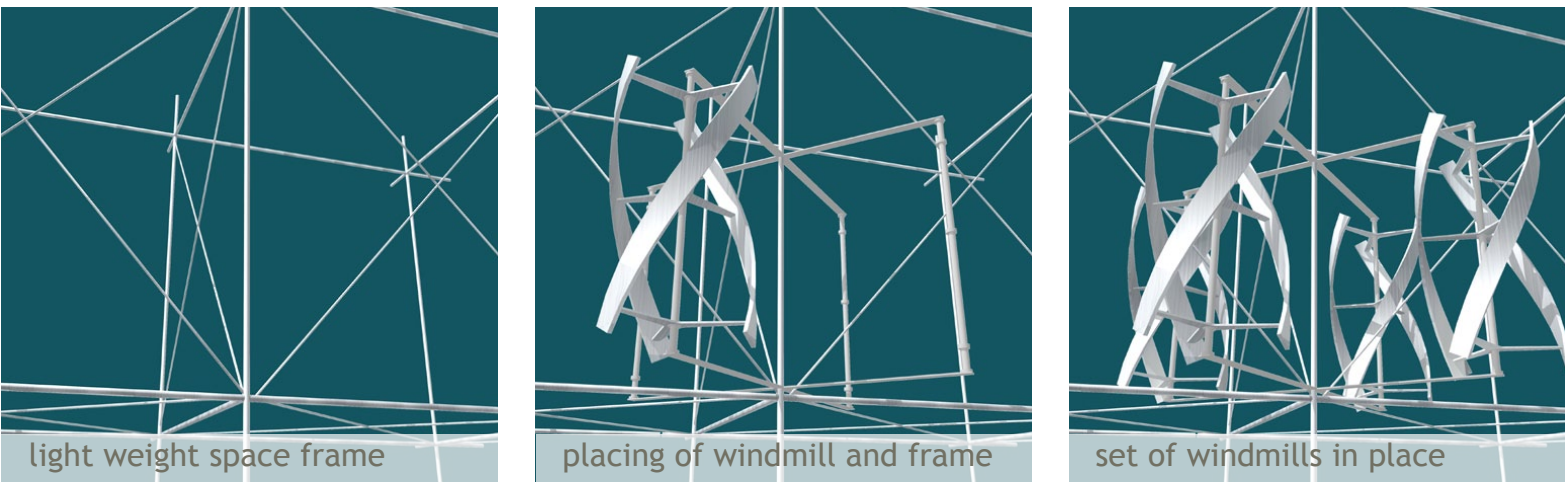
detail view

- Ⓐ frame equipped for urban windmill
- Ⓑ windbraced space-frame to provide stability with a minimum of material
- Ⓒ urban windmill, Visionair3 ie.



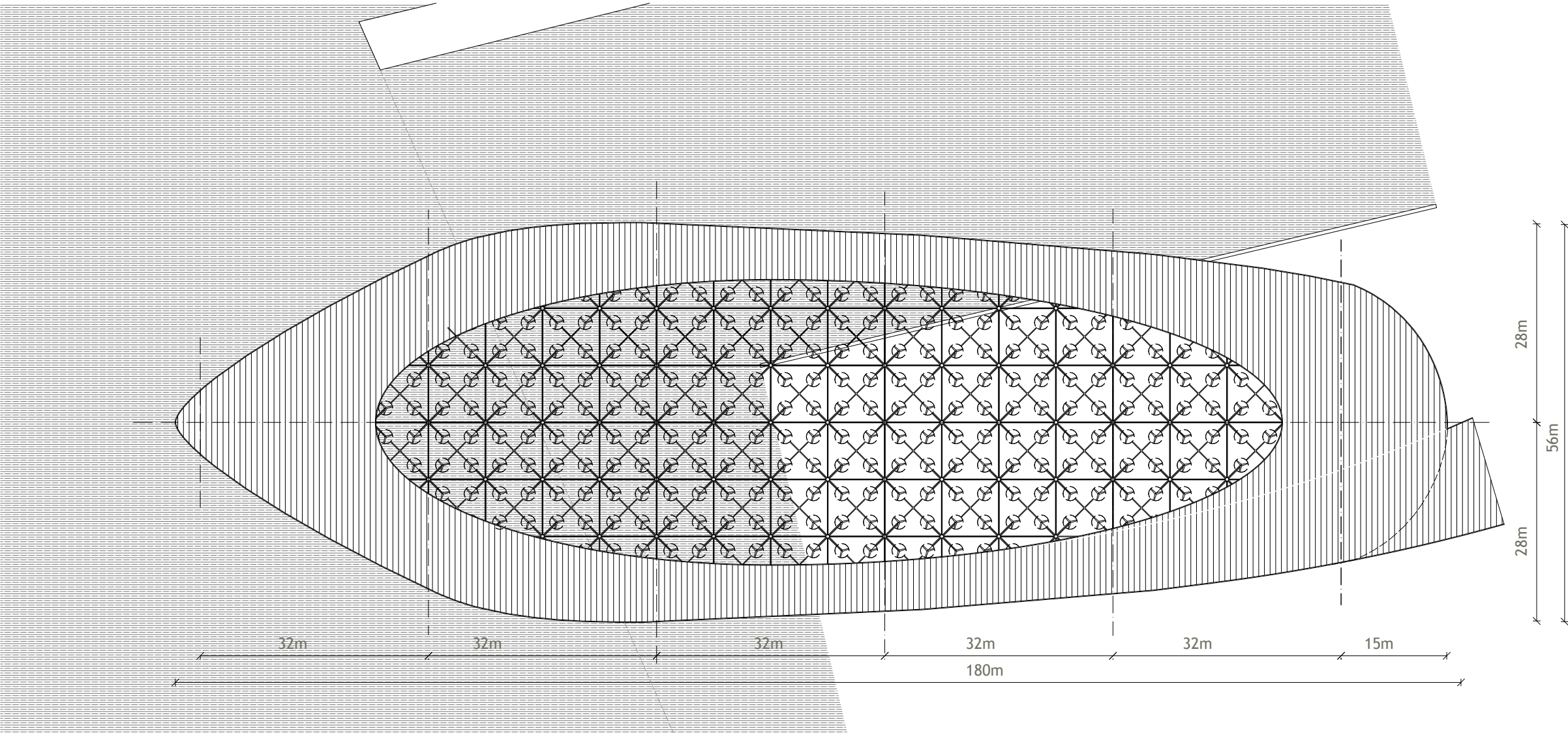
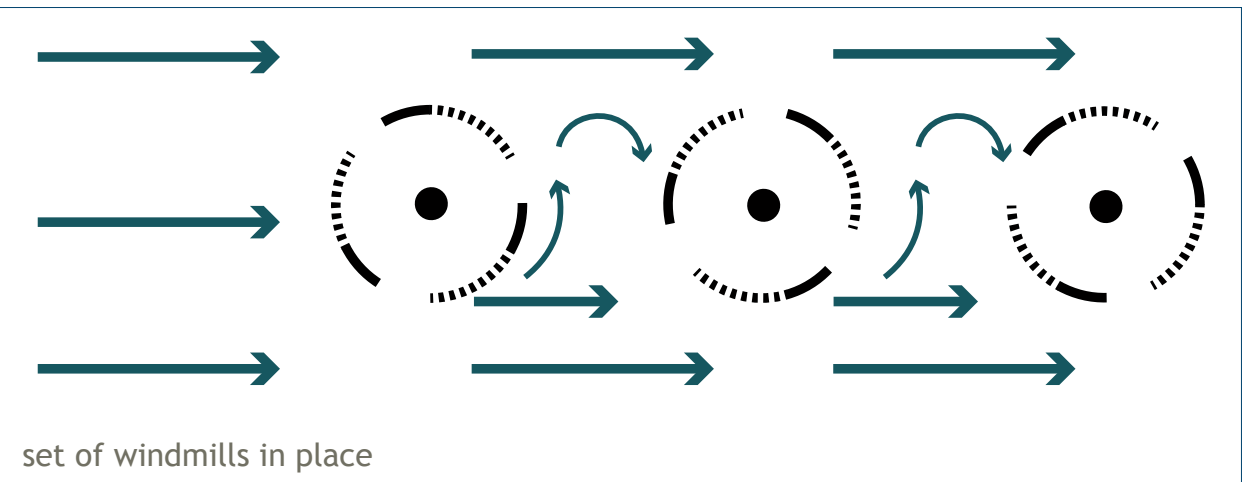
construction diagram

A space-frame is used, thereby creating a steel frame providing stability in the harshest conditions with a minimum of material. This steel frame can than be equipped with the required number of urban windmills.

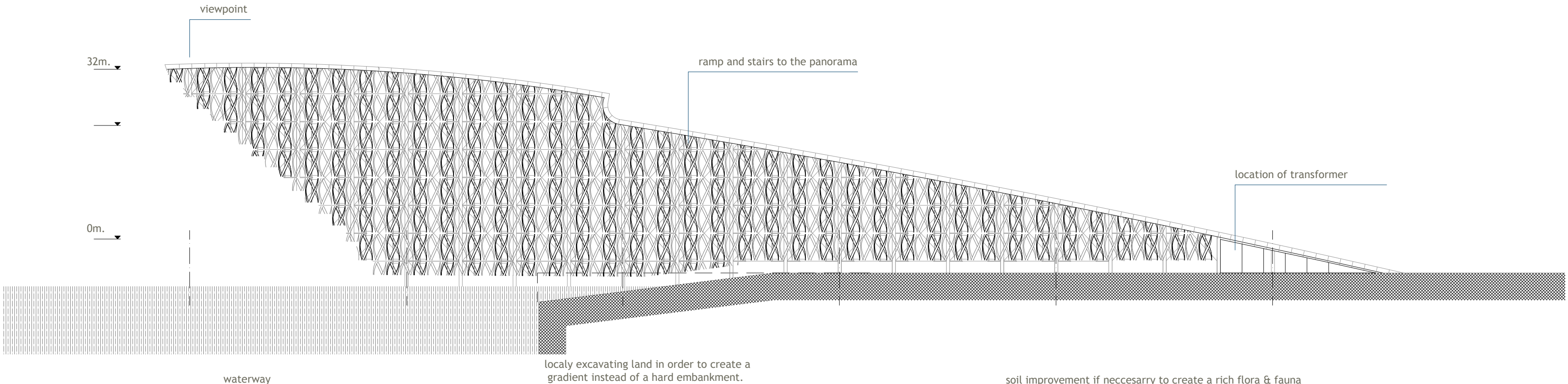


thermics

There is a good reason to expect an improved return by applying multiple windmills. When the first mill will turn the blades creates a momentum which will create an 'early kick in' moment for the next windmill. The second mill will start to spin before the wind takes over. Thereby creating a better result. Test will have to determine the optimum distance between the mills.



plan view



elevation