



# Light-guard know your flood risk

Light guard is a land art generator for flooding prevention risk. Responding to the site in the form of a climate prevention, we proposed a stimulating dynamic structure. Light guard consists of a series of metal column spaced 1 meter wide and 35 meters high. Each series of two columns support an autonomous system alternating photovoltaics panels and a system of plates with bright colored led.

The Refshaleøen site provides a central location in the middle of Copenhagen harbor overlooking a distant vision device.

The project is not built on the site, but the leaves for various events (euro vision, concert), it is a landscape that generates a prevention against the climatic risks in the future.

A footbridge connects the project site and allows the residents and tourists to enjoy the lookout.

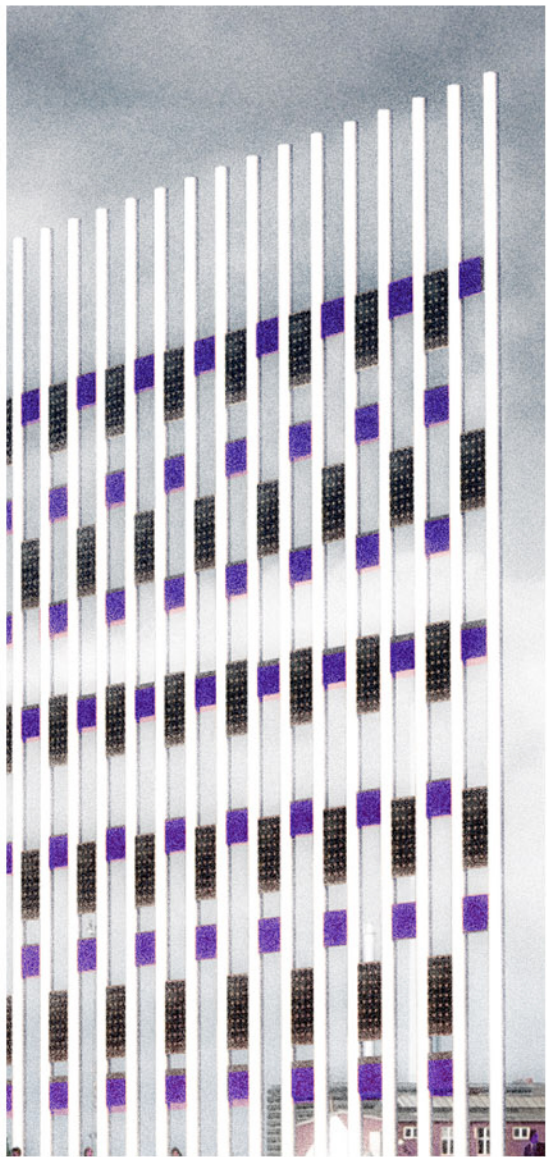
The 137 metal columns, is light is easy to implement, a corridor of 1.50 meters wide of chaque side column gives stability to the project

0.00 hours



level 6 - flood  
Devastating floods

12.00 hours



level 2 - évacuation  
Risk imminent

24.00 Hours



level 3 - mesure  
Evacutation

48.00 Hours



level 3 - prévention  
flooding risk high

72.00 Hours



level 2 - prévention  
flooding risk moderate

--- Hours



level 1 - prévention  
flooding risk normal