



# Land Art Generator Initiative 2014

Looking at the empty pier it is hard not to look back old photographs, on which you could see the vibrant area – production floors, huge shipyard cranes growing between them, ships standing on the docks and waiting to launch. The first thought before creating a LAGI was to recreate the enormous machine, the structure, sculpture in space, namely the shipyard.

It has been decided to design a new industrial facility, however producing the green energy, not ships. Assumedly it is a multi-level green space park, an orchard opened to residents of Copenhagen.

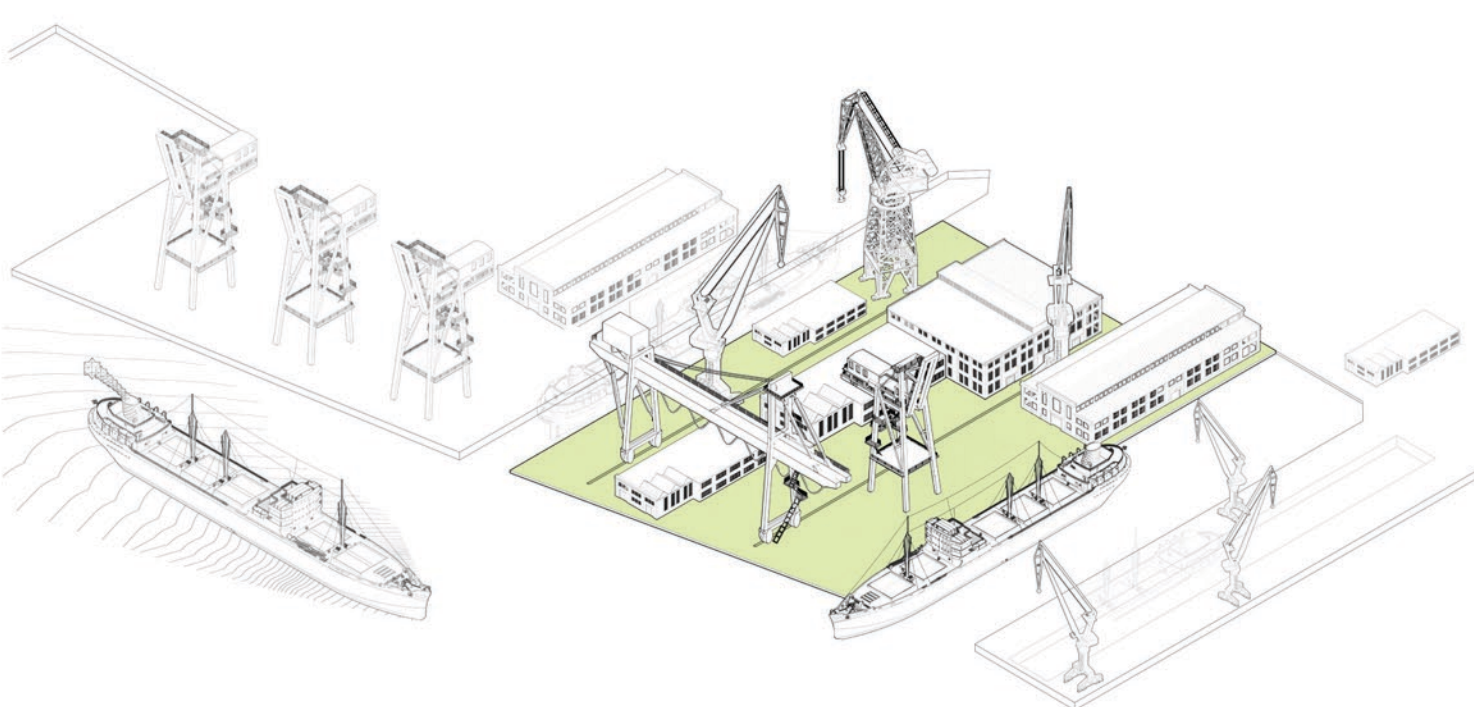
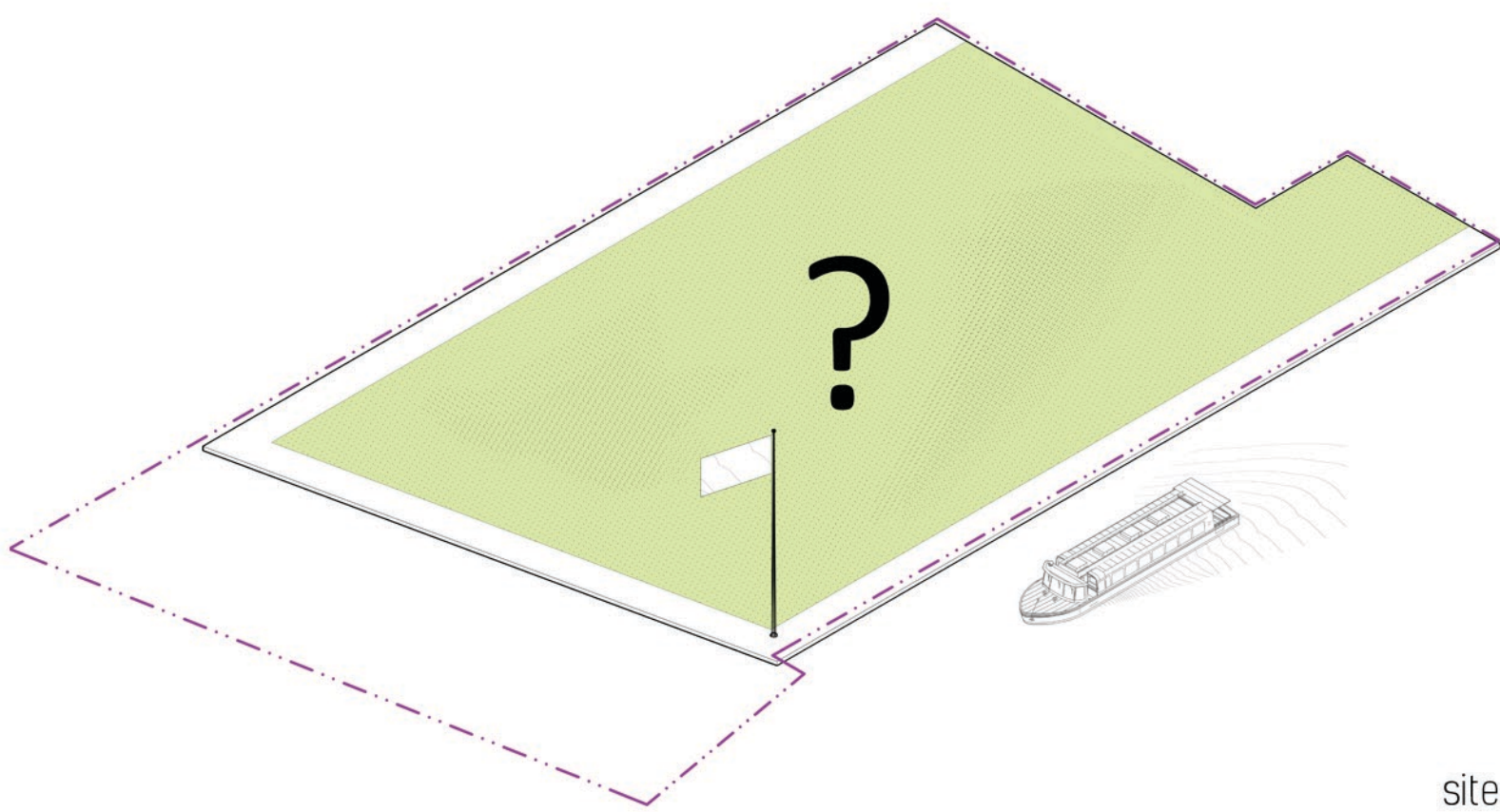
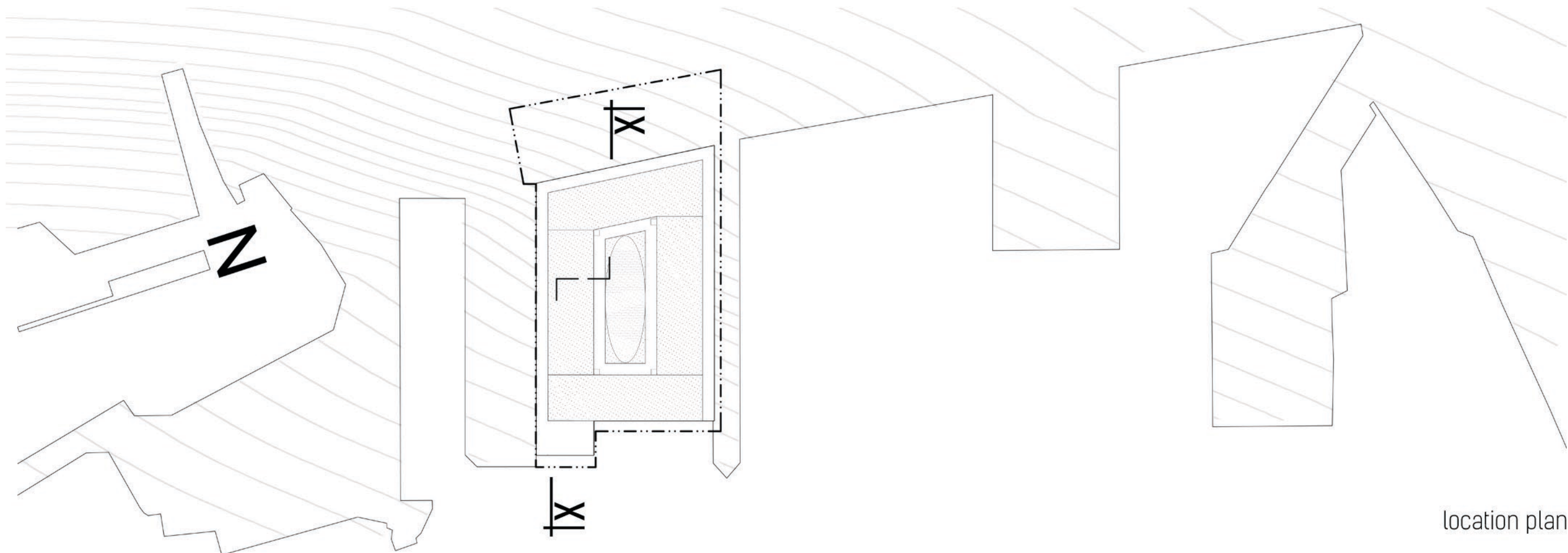
While creating the object it has been decided to refer to the historical layout of the pier. Directions and composition have been subordinated to waterfront exposure, objects in the neighborhood of the designed plot plan. It has been decided to surrender the dimensions and cubic capacity to the existing shipbuilding halls and cultural facilities (such as Opera and the Royal Danish Theater). The design is supposed to refer to the elements of the industrial district Refshaleøen.

There had been made efforts so that the property was only a place of power generation, but also the space that will be conducive to the residents of Copenhagen. The impact is to be obtained on several levels. Among other things, the level of education, recreation and the production of social interaction.

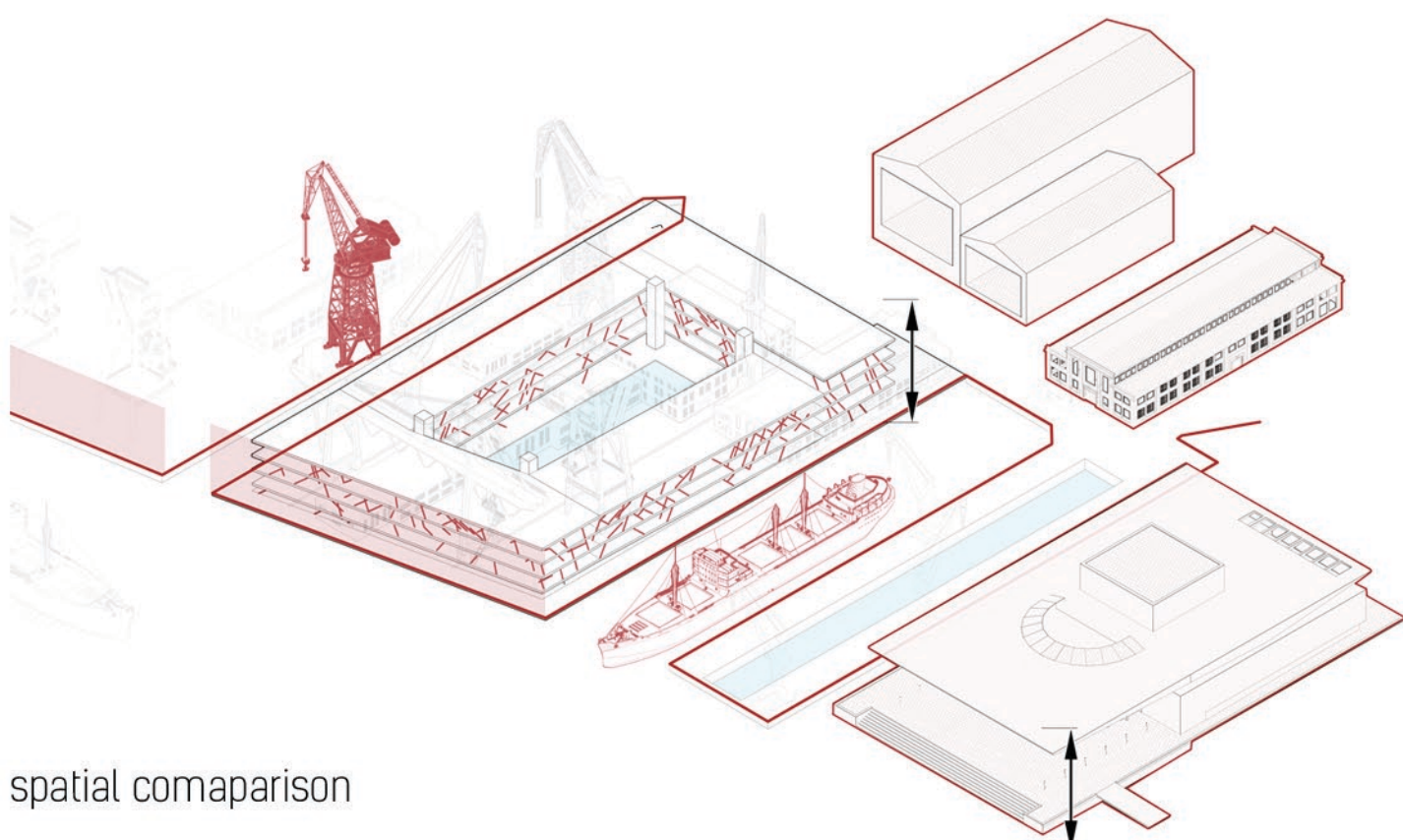
The building will be opened to all as a multi-level park and its ramps as well as a courtyard will create a green space walks, active recreation and cultural events. It is planned to locate an information point at the main entrance where would be a place to present the message of sustainable development and the acquisition of green energy.

Another aspect of the object is that it may be opened it to residents in the form of an orchard - a place where everyone would find a place to plant, grow (look after) plant, vegetables. This would facilitate the strengthening of social bonds, and would be the best lesson in the field of nature - taking care of it and using its benefits.

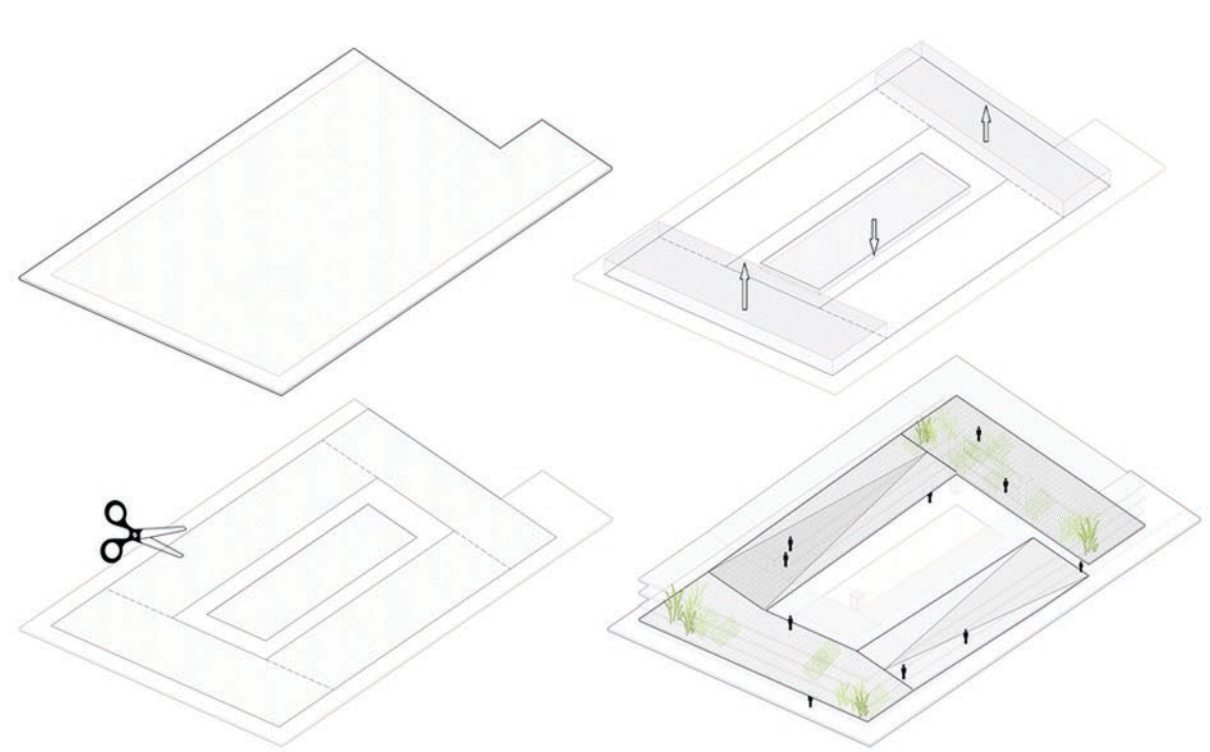
# Power Plant



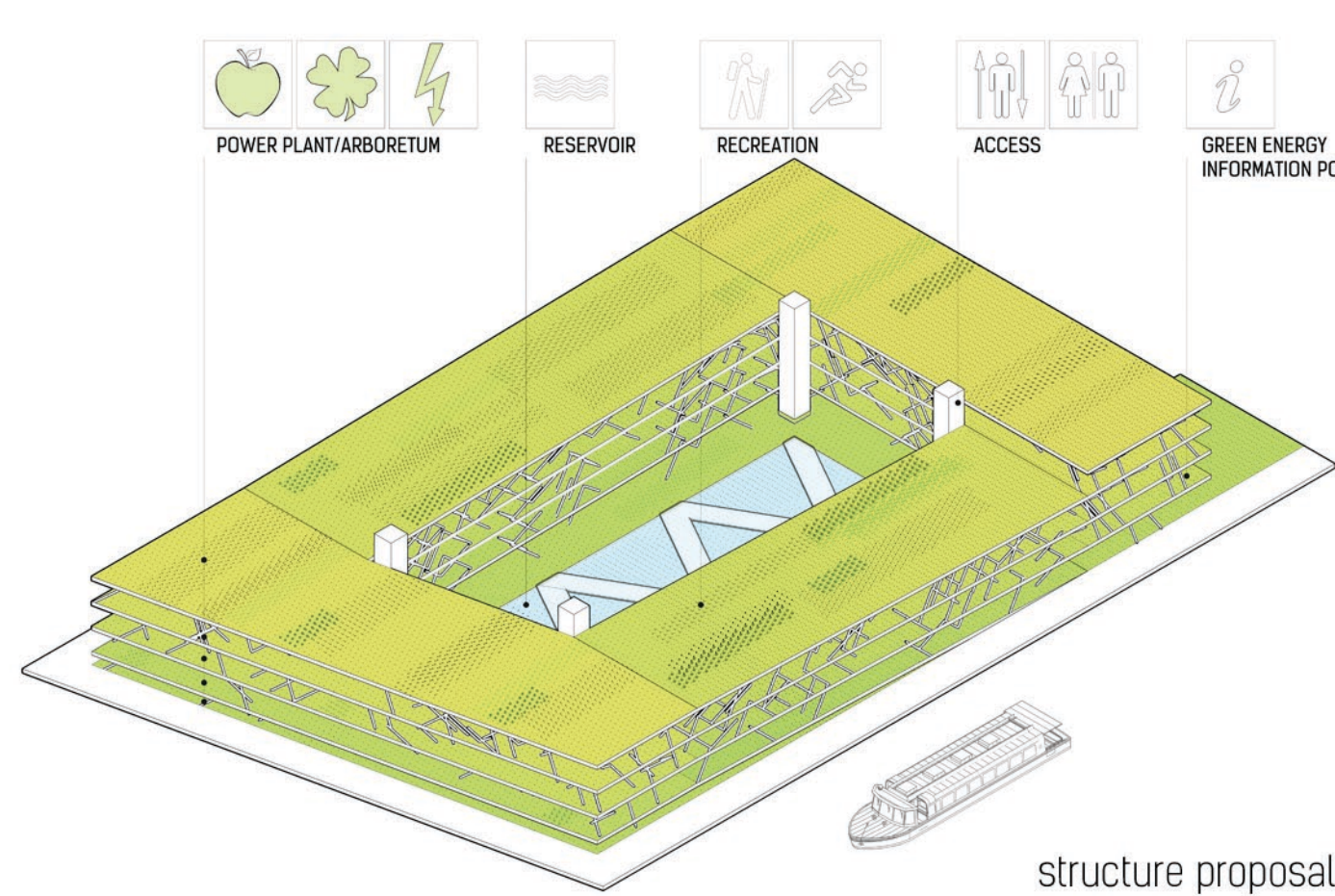
historical area development



spatial comaparison



shaping process



structure proposal