

WIND PATH  
the borrowed element

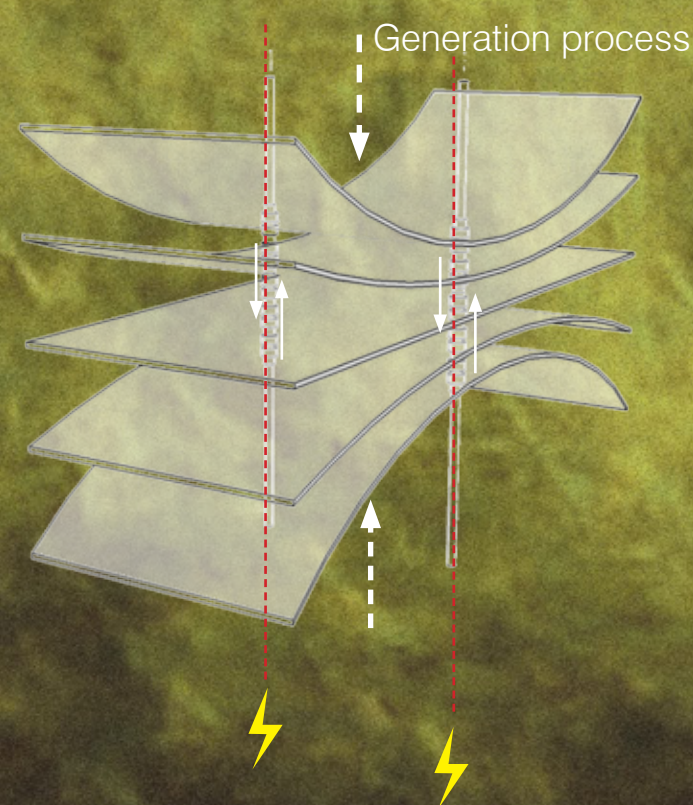
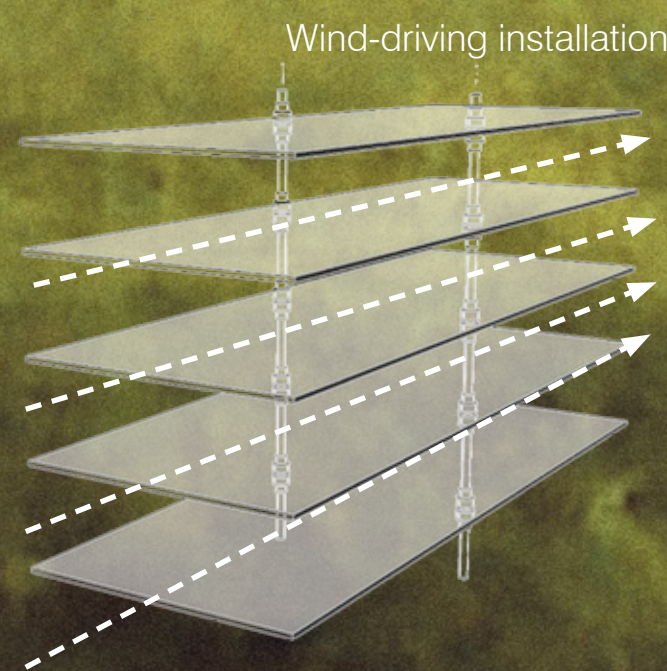
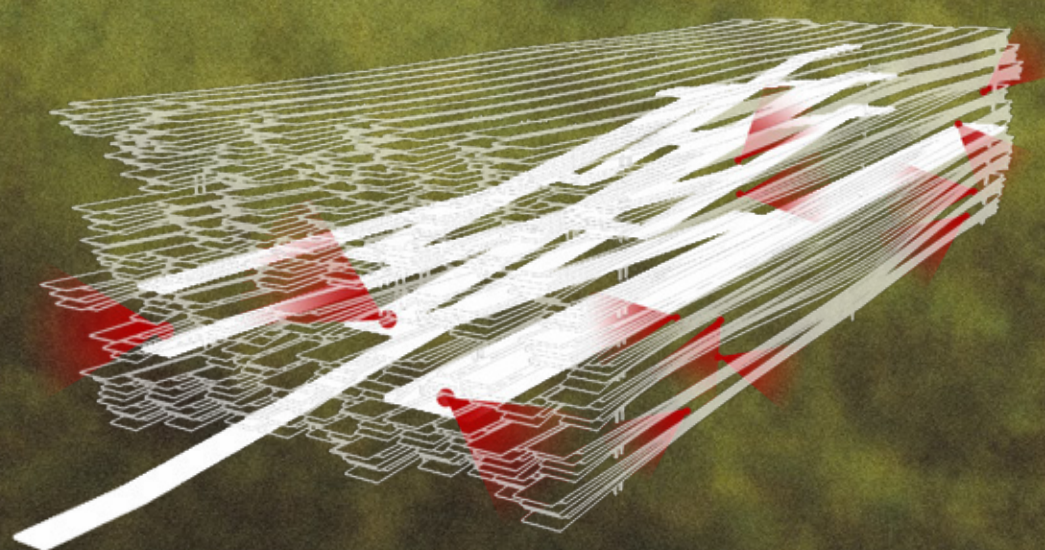


DESIGN PRINCIPLES  
the detailed strategy

*Onshore Power* is focused on utilizing ecological flows and infrastructural interventions as an alternative solution to energy production and to create connections between human and landscapes. The proposed structure acts as a giant battery which harnesses wind energy through the oscillations of [ ] and stores energy in its microtubes. The energy produced is used to power the increasing numbers of boats, which in turn allows visitors to engage with the water in a sustainable manner. Apart from its functionality, *Onshore Power* also intends to invite travellers, families and communities to experience the power of nature, and most importantly to be inspired by the beauty of Denmark.

CONSOLIDATED CONCEPT  
the energy generators and associated lookouts

Foot path and potential windows



# ONSHORE POWER